

College of Nursing and Midwifery

CATALOG | ACADEMIC YEAR 2020-2021



جامعة محمد بن راشد
للطب و العلوم الصحية
MOHAMMED BIN RASHID UNIVERSITY
OF MEDICINE AND HEALTH SCIENCES

**College of Nursing
and Midwifery**

TABLE OF CONTENTS

Topic	Page
1 Academic Calendar 2020-2021	5
2 Institutional History	6
3 Vision, Mission and Goals	6
4 Statement of Licensure and Accreditation	7
5 College of Nursing and Midwifery Goals and Outcomes	7
6 The Institution	8
6.1 MBRU's Structure	8
6.2 College of Nursing and Midwifery Structure	8
7 Resources and Facilities	9
7.1 Physical Teaching Resources and Facilities	10
7.2 Clinical Teaching Facilities	11
7.3 Library Resources	12
7.4 Educational Technology	13
8 Partnerships and Collaborations	13
9 Admissions Policies	15
10 Financial Policies	16
10.1 Tuition and Other Fees	16
11 Student Services and Registration	17
12 Student Code of Conduct	17
13 Student Grievance Policy	17
14 Academic Integrity	17
15 Definition of a Credit Hour	17
16 Outline of the MSc Nursing Programs	18

TABLE OF CONTENTS

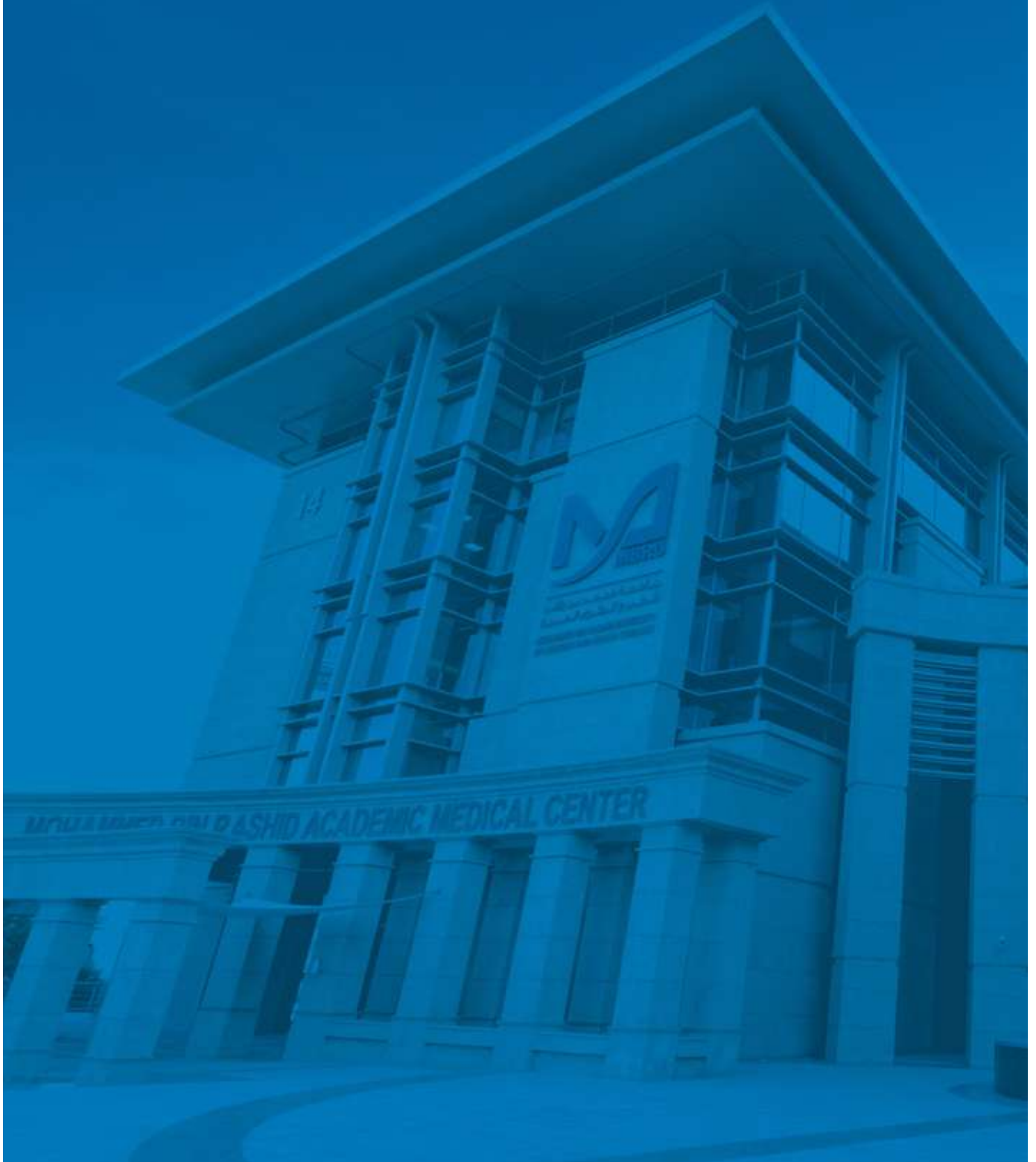
17	Nursing MSc Program Goals, Learning Outcomes and Completion Requirements	18
	17.1 MSc. in Cardiovascular Nursing	18
	17.2 MSc. in Pediatric Nursing	20
18	General Education	22
19	Structure and Goals of Nursing MSc Program	22
	19.1 Nursing MSc Curriculum	
	19.2 Curriculum Structure	23
20	Sequencing of Courses for the MSc Nursing Programs	25
	20.1 MSc in Cardiovascular Nursing Degree Plan – Class of 2021	25
	20.2 MSc in Pediatric Nursing Degree Plan – Class of 2021	25
21	Course Descriptions	26
	21.1 Core Courses – MSc in Cardiovascular and Pediatric Nursing	26
	21.2 Specialist Courses – MSc in Cardiovascular Nursing	27
	21.3 Specialist Courses - MSc in Pediatric Nursing	28
22	Student Assessment and Progression	28
	22.1 Summary of Students' Assessment and Progression Regulations	29
	22.2 Guidelines	30
	22.3 Weights of Assessments	30
	22.4 Grading System	30
	22.5 Appealing an Assessment Process	31
23	Examination Regulations	31
	23.1 Responsibilities of the Student Assessment and Progression Committee	31
	23.2 Examination Guidelines	32
	23.3 Review of Examinations	32
	23.4 Standard Setting	32
	23.5 Marking of Examinations	33

TABLE OF CONTENTS

23.6	Grades and Grading	33
23.7	Item Analysis and Test Statistics	33
23.8	Feedback to Students on Examinations	33
23.9	Training of Students in Examination Methods	33
23.10	Access to Old or Previous Exams	33
23.11	Repeat Exams	33
23.12	Absenteeism from Examinations	34
23.13	Misconduct in Examinations	34
23.14	Online Exams	
25	Professional Behavior and Student Fitness to Practice	36
25.1	Expectations for Appropriate Fitness to Practice	37
25.2	Policies and Procedures for Dealing with Suspected Breaches of Fitness to Practice	43
25.3	Procedures for Handling an Allegation of a Breach to Fitness by Practice by Nursing Student	44
25.4	Procedures for Dealing with a Nursing Student's Serious illness or Disability Likely to Affect Fitness to Practice	48
26	Statement on the Research Policy of the Institution	52
26.1	Policies and Procedures on Projects, Theses and Dissertations	53
27	Faculty	
28	Senior Administrators	
29	Board of Trustees	
30	Contact Information	

1

ACADEMIC CALENDAR



1. ACADEMIC CALENDAR (2020 - 2021)

The key dates relating to the Calendar for 2020 - 2021 are set out in the table below. MBRU adheres to the academic calendar requirements of the UAE Ministry of Education.

Semester 1	Dates
New Student Orientation	August 30 - September 10, 2020
Classes Start	September 13, 2020
Semester 1	August 30 - December 10, 2020
Semester 1 – Exams	December 6 - December 10, 2020
Semester 1 – Resit Exams	April 11 – April 15, 2021
WINTER BREAK – 4 weeks	December 13, 2020 - January 7, 2021
Semester 2	Dates
Semester 2	January 10, 2021 – April 15, 2021
SPRING BREAK – 2 weeks	March 28, 2021 – April 8, 2021
Semester 2– Exams	April 11 – April 15, 2021
Semester 2– Resit Exams	August 22 – August 26, 2021
Clinical Placement	April 25– August 12, 2021

UAE PUBLIC HOLIDAYS 2020-2021 (SUBJECT TO OFFICIAL CONFIRMATION)

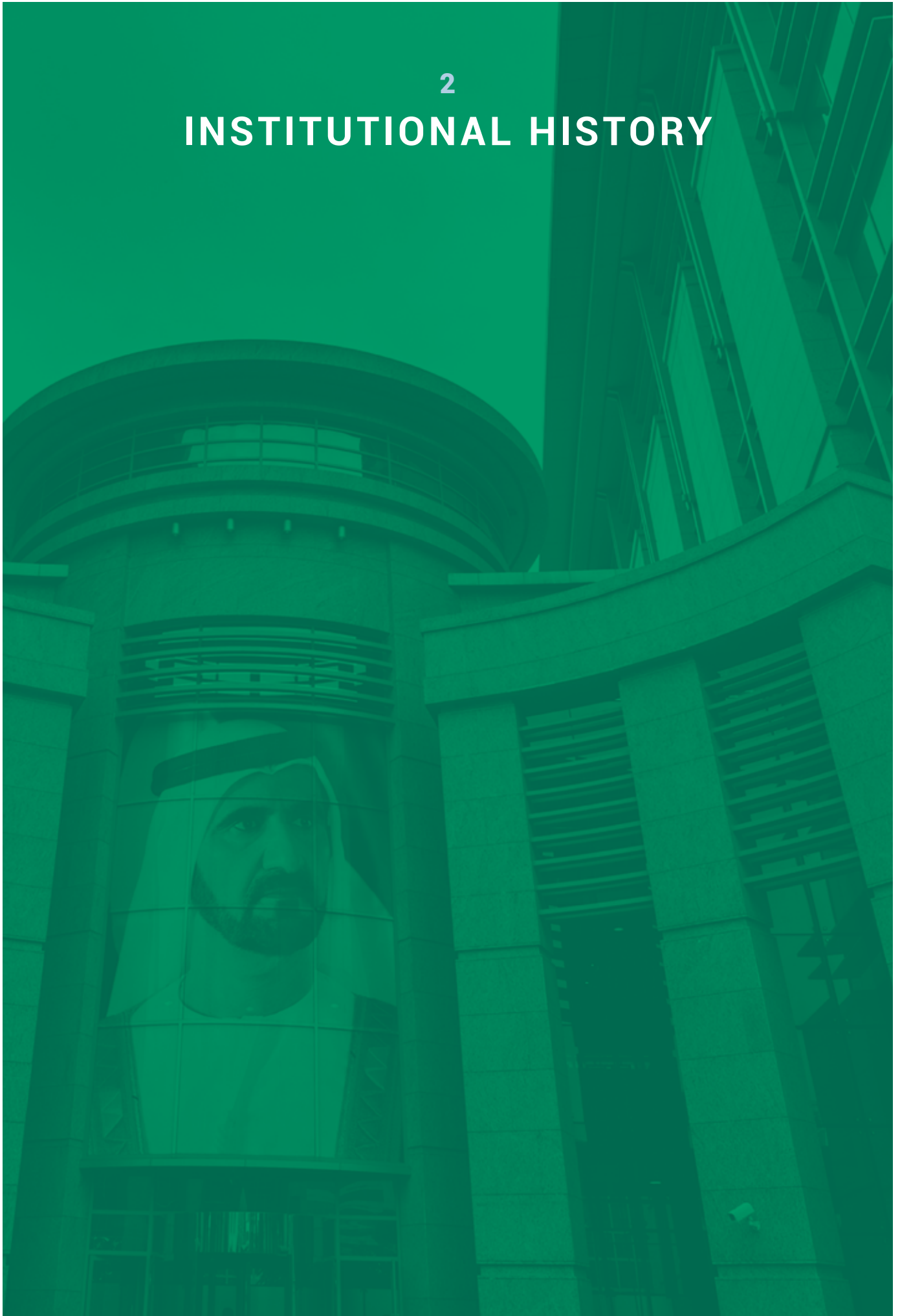
Occasion	Dates
Hijri New Year	August 23, 2020
Prophet's Birthday	October 29, 2020
Martyr's Day	December 1, 2020
UAE National Day	December 2 – 3, 2020
New Year's Day 2021	January 1, 2021
Ramadan Begins	April 13, 2021
Eid Al Fitr	May 12 – 15, 2021
Arafat & Eid Al Adha	July 18 – 22, 2021
Hijri New Year	August 9, 2021

Public holidays are subject to confirmation from relevant authorities and will be announced by the MBRU administration.

Any revisions to teaching and clinical skills scheduling, examination timetables, public holidays, and closure periods, will be communicated via email or MBRU Student Portal.

2

INSTITUTIONAL HISTORY



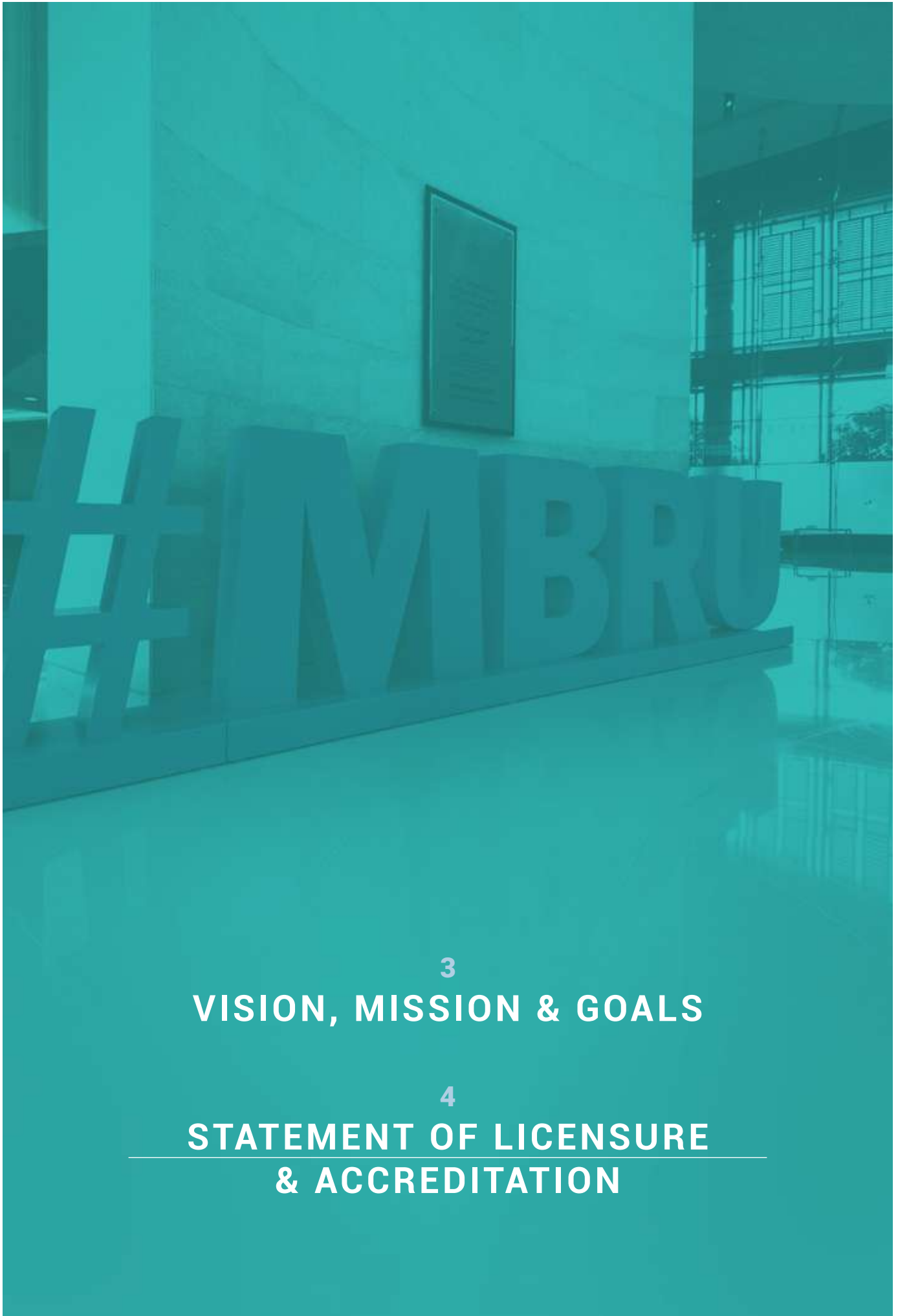
2. INSTITUTIONAL HISTORY

His Highness Sheikh Mohammed Bin Rashid Al Maktoum, Vice President and Prime Minister of the United Arab Emirates and Ruler of Dubai announced the establishment of Mohammed Bin Rashid University of Medicine and Health Sciences (MBRU) in 2014. In June 2016, His Highness signed Decree number 7 for the formal establishment of the University.

The College of Medicine offers undergraduate and postgraduate programs, the Bachelor of Medicine Bachelor of Surgery (MBBS) and a Master of Science in Biomedical Sciences. The Hamdan Bin Mohammed College of Dental Medicine (HBMCDM) offers a range of specialty postgraduate dentistry programs, in Endodontics, Orthodontics, Pediatric Dentistry, Prosthodontics and Periodontics. The College of Nursing and Midwifery offers a postgraduate program, a Master of Science in cardiovascular nursing or pediatric nursing.

The University is licensed by the Commission for Academic Accreditation in the Ministry of Education of the United Arab Emirates to award degrees and qualifications in higher education.

All programs offered by MBRU are benchmarked against international standards to ensure a high-quality education which allows its graduates to be competitive globally, both in the job market and in securing advanced specialist training positions. MBRU's academic partner is Queen's University Belfast in the United Kingdom. This partnership aims at enhancing the quality of all aspects of the medical and nursing programs and supporting the University on strategic and operational issues.



3

VISION, MISSION & GOALS

4

**STATEMENT OF LICENSURE
& ACCREDITATION**

3. VISION, MISSION AND GOALS

Vision

A global hub for innovative and integrated healthcare education and research at the service of humanity.

Mission

To advance health in the UAE and the region through an innovative and integrated academic health system, that is nationally responsive and globally connected, serving individuals and communities.

Values

- **Respect** - Respect - Respect for other opinions and differences
- **Integrity** - Fostering honesty, openness, transparency and accountability
- **Excellence** - Embracing quality, motivation and creativity in our communications and services
- **Giving** - Creating a positive and happy relationship with our communities
- **Connectivity** - Building partnerships with local, regional and international organizations

Goals

- To establish the Emirate of Dubai as a hub for academic specializations in medicine and health sciences
- To contribute to achieving sustainable development through supporting scientific advancement in medicine and health sciences
- To provide the community with qualified medical and healthcare personnel who are able to efficiently address various health issues
- To create a favorable environment for conducting scientific research that enhances the health sector in the community, through supporting education, scientific research, and continued professional development in medicine and health sciences; and
- To achieve a leading position and excellence in medicine and health sciences at the local, regional, and international levels.

4. STATEMENT OF LICENSURE AND ACCREDITATION

MBRU is licensed by the Ministry of Education of the United Arab Emirates, since 2014 to award degrees and qualifications in higher education.

Through its Commission for Academic Accreditation (CAA), the Ministry has accredited all MBRU graduate and undergraduate degree programs.

COLLEGE OF NURSING AND MIDWIFERY GOALS AND OUTCOMES



5. COLLEGE OF NURSING AND MIDWIFERY GOALS AND OUTCOMES

Goal 1 and Outcomes

The College of Nursing and Midwifery will graduate highly skilled and competent nursing professionals who practice compassionately, ethically and maintain a high level of professionalism.

Outcome 1A: Graduates secure and complete competitive postgraduate training.

Outcome 1B: Graduates pursue successful careers in nursing and midwifery.

Goal 2 and Outcomes

The College of Nursing and Midwifery will create an environment conducive to impactful and innovative nursing and midwifery research.

Outcome 2A: Faculty, students and graduates secure internal and external funding for scholarly activities.

Outcome 2B: Faculty and students disseminate research findings through peer reviewed publications and presentations in professional meetings.

Goal 3 and Outcomes

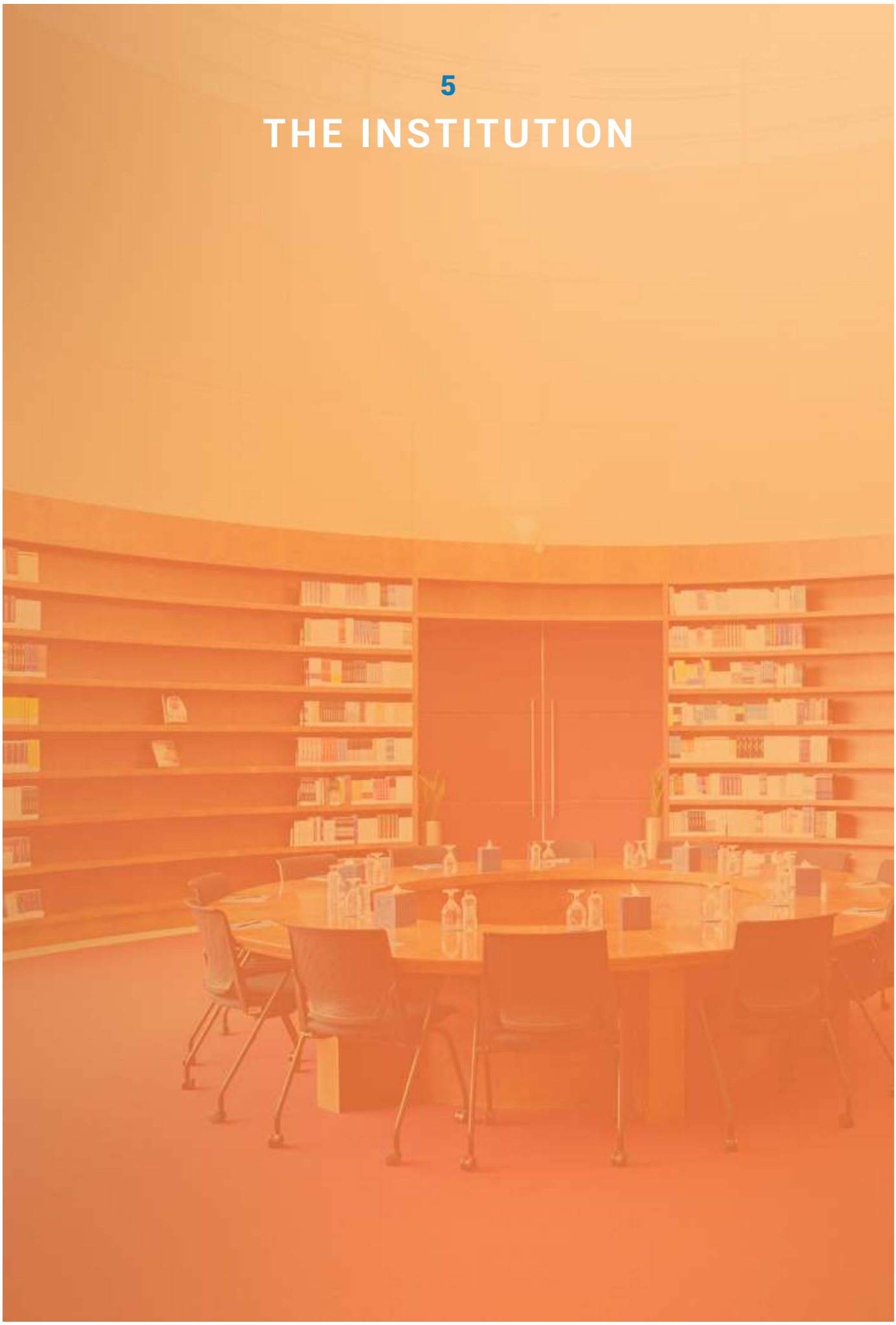
MBRU College of Nursing and Midwifery will actively engage with the community to preserve and promote health.

Outcome 3A: Faculty, staff and students organize and participate in health-related community activities.

Outcome 3B: Engagement in community activities result in positive change in the health of the community.

5

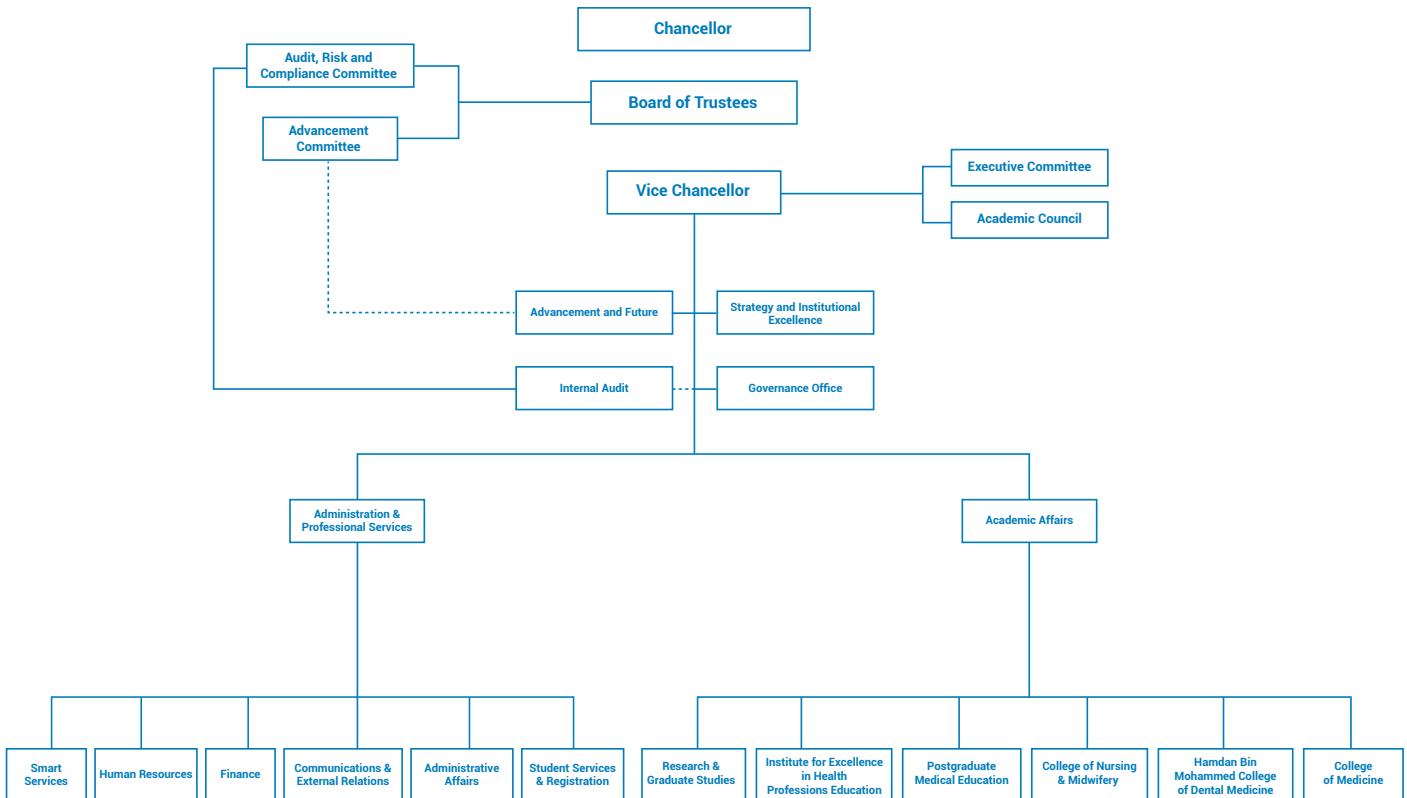
THE INSTITUTION



6. THE INSTITUTION

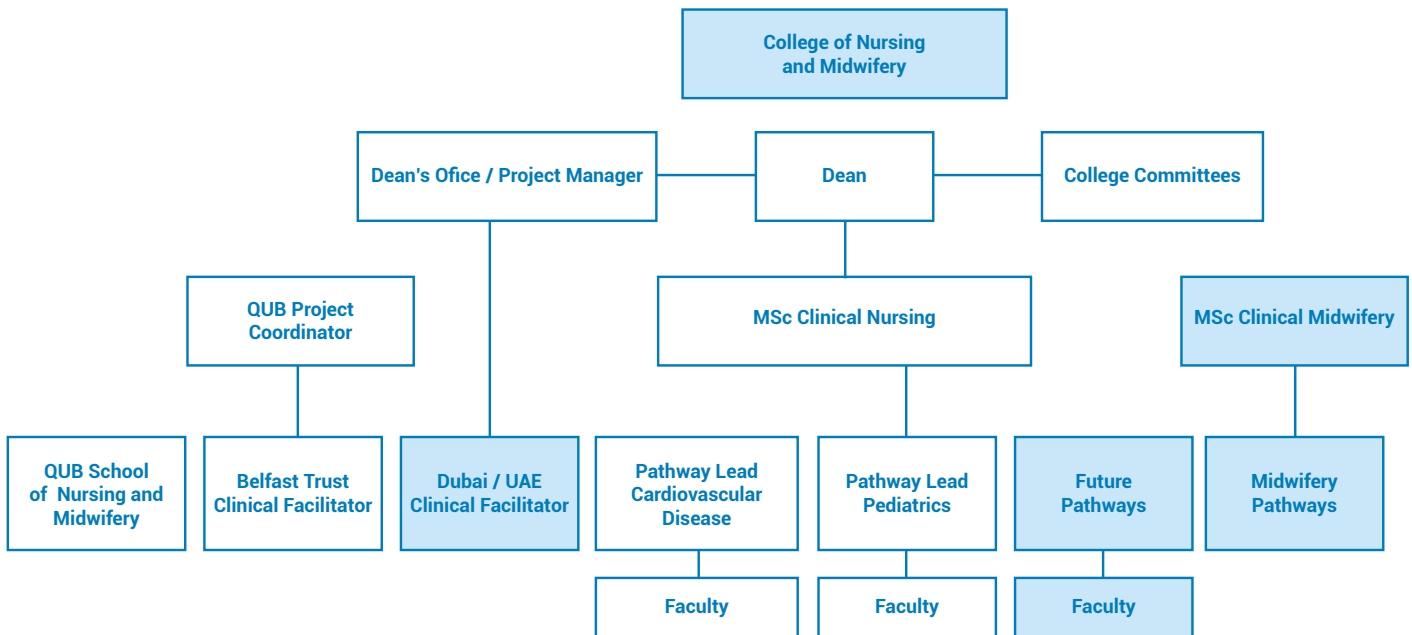
6.1 MBRU's Structure

The structure of the University is shown in the chart below. The Board of Trustees is the highest governing body of MBRU and equates to "The Board" in the Commission for Academic Accreditation Standards.



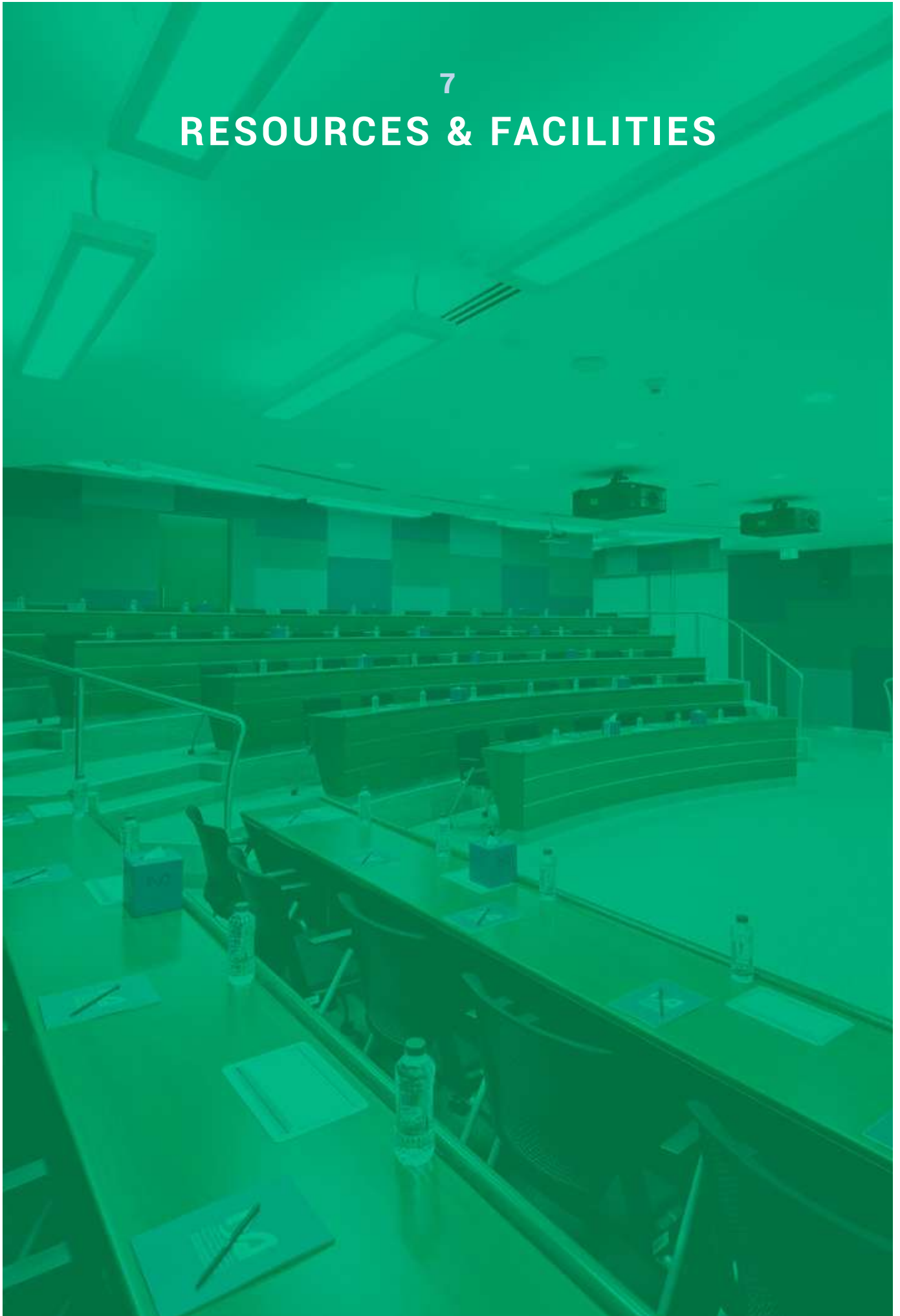
6.2 College of Nursing and Midwifery Structure

The College of Nursing and Midwifery is one of the component Colleges of MBRU. The organization chart below provides an overview of its structure.



7

RESOURCES & FACILITIES



7. RESOURCES AND FACILITIES

The table below provides a summary of the available learning facilities at MBRU:

Venue	AV/IT	*Additional Comments
Basement 1 Right Wing		
Khalaf Al Habtoor Medical Simulation Center (KHMSC) Accident & Emergency	IP Camera	Simulation Center
Ground Floor Right Wing		
Case Method Hall	Ultra-Wide Screen Video Conferencing Audio Conferencing Lecture Capture	75 – 85 Seats
Anatomy Dissection Hall	10 TV Screens 2 Projections Content Sharing with Case Method Hall	10 Tables
Ahmed Siddiqui Auditorium	Wide Screen Video Conferencing	330 Seats
First Floor Right Wing		
Lecture Hall 1 & 2	Dual Rear Projection	40 – 50 Classroom
Lecture Hall 3	Single Front Projection	40 Classroom
Lecture Hall 4	Dual Rear Projection Video Conferencing	60 – 70 Classroom
Lecture Hall 5	Dual Rear Projection	60 – 70 Classroom
Case Method Hall	Dual Rear Projection Video Conferencing Audio Conferencing Lecture Capture	65 Seats
Small Meeting Rooms 1 & 2	TV Screen	6 – 10 Seats
Video Conference Room	Video Conferencing	6 – 8 Seats
First Floor Left Wing		
Al Maktoum Medical Library (AMML) Meeting Room 1 & 2	TV Screen	8 – 10 Seats
Second Floor Right Wing		
KHMSC Training Room	Portable Screen & Projector	40 Classroom
KHMSC Ward	IP Camera	Simulation
KHMSC ICU	IP Camera	Simulation

Venue	AV/IT	*Additional Comments
KHMSC OR	IP Camera	Simulation
KHMSC Debriefing Room	Portable Screen & Projector	
KHMSC Dental Simulation	Nil	Simulation
KHMSC Part Task Trainer Room	Nil	Simulation
MBRU Design Lab supported by Wasl	VR and AR	Capacity: 32
Second Floor Left Wing		
AMML Group Study Rooms 1-7	Interactive TV's	6 – 10 Seats
Third Floor Right Wing		
Lecture Halls 6 -11	Provisions Only (Front Projection Screens Planned)	30 – 35 Seats in each hall
Tutorial Rooms 1-10	Provisions Only (TV's Planned)	8 Seats in each room
Clinical Consulting Rooms 1 -12	Provisions Only (IP Cameras, TV's Planned)	Simulation
Fourth Floor Left Wing		
Computer Lab	70 Desktops 1 Front Projection Screen (Right Side)	Computer Based Teaching - Pathology, Histology, Biochemistry, Pharmacology & Molecular Biology Computer Examination Center
Multidisciplinary Lab	Nil	Wet Lab - Biochemistry, Physiology, Pharmacology & usage of wet biological specimens.
Computer Assisted Lab	2 Interactive Displays	Physiology Practicals Biochemistry Demonstrations Molecular Biology Pathology

7.1 Physical Teaching Resources and Facilities



7.1 Classrooms

7.1.1.1 The Mohammed Bin Rashid Academic Medical Center is the home base for MBRU. Currently, it houses multiple large classrooms accommodating up to 100 students*, all dedicated for use by the College of Medicine. Most classrooms are equipped with double presentation screens and up to date audiovisual equipment. There is also electronic connectivity to the large 350-seater* auditorium, with an internet port connection for each student.

7.1.1.2 In addition, 10 tutorial rooms each accommodating 8-10 students* and the tutor will be added for small group learning.

7.1.1.3 The entire building has a wireless connection to the Internet. The students are expected to bring to class either an electronic tablet or a laptop.

7.1.2 Case Demonstrations

MBRU houses two state-of-the-art case method halls classroom designed for case demonstrations. Each can accommodate 65 students*. The acoustics are such that the speaker in the central part is clearly audible in all parts of the hall without the need for a microphone. The hall has connectivity to the main 350-seater* auditorium.



7.1.3 Teaching Laboratories

MBRU has three teaching laboratories. Each can accommodate 50 students* at a time. A 'dry' teaching laboratory is dedicated for projection and demonstrations in Histology, Pathology, and Microbiology. The 'wet' teaching laboratory is for practical sessions in subjects that involve wet preparations.

7.1.4 Computer Assisted Learning Laboratory

MBRU has a 60 station* computer laboratory designed for teaching Pathology, Hematology and Anatomy through digital microscopy.





7.1.5 Anatomy Lab

MBRU has an Anatomy Lab that serves as a dissecting room for teaching Anatomy and related subjects. It has 10 dissecting tables (each accommodating 8 students*), a morgue for cadavers and body parts, a storage facility, student lockers, two debriefing rooms, two faculty offices, technician offices, and a case method hall for demonstrations.

7.1.6 Research Laboratories

The research laboratory facilities available to MBRU have increased dramatically during the past year as a result of the development of a biomedical research center in collaboration with the Al Jalila Foundation. In addition to substantial research laboratory space on the fourth floor of the University, there is a state-of-the-art suite of laboratories occupying the entire seventh floor of the Al Jalila Foundation building, which is immediately adjacent to the main University building.

7.1.6.1 The Mohammed Bin Rashid Medical Research Institute

The Mohammed Bin Rashid Medical Research Institute on the 7th floor of Al Jalila Foundation has a collaborative area, 3 meeting rooms, 5 faculty offices, and an extensive write-up area with desks and computer terminals to accommodate 60 graduate students*, post-doctoral fellows and laboratory assistants.

Entry to the laboratory section of the 7th floor is regulated by an access control system. The layout includes a large (320 M2) open laboratory fully equipped with state-of-the-art instrumentation and fitted with 10 large island benches which can each accommodate 6 persons*. The facility also has 3 tissue culture laboratories, an equipment room, a chemical store, a service room, a cold room, a tissue bank, a microscopy room and dedicated laboratories for molecular pathology and genetics. A basement facility incorporates a space for animal facilities.

7.1.6.2 MBRU Research Labs

The 4th floor of the MBRU building houses a suite of 7 research laboratories with areas between 20 and 49 M² (total 218 M²). In addition, this area includes a tissue culture suite with 2 rooms, as well as a cold room, chemical and consumable stores. This area also contains the microbiology research laboratory.

* A reduced number of students may be put in place to ensure a more secure environment to the users where social distancing is required.

7.2 Clinical Teaching Facilities

7.2.1.1 Simulation and Clinical Skills Training Center

The Khalaf Ahmad Al Habtoor Medical Simulation Center, located on the second floor of the academic building is a training facility where healthcare professionals will receive training to improve quality of care and teamwork in a simulated environment with no risk to patients. The Simulation Center, a 19,500 sq. ft. facility, has all the elements of a virtual hospital. It has two fully functioning Operation Rooms; four ICU Bays - including a pediatric bay; and a wardroom, three debriefing rooms, a small meeting room and a large training room on the second floor. There is a large skills training and competency testing room (e.g. intravenous cannulation, endotracheal intubation, lumbar puncture). In the basement is a complete Emergency Room with facilities for imaging.

7.2.1.2 Additional consultation and meeting rooms are located on third floor of the Simulation Center.

7.2.2 Affiliated Healthcare Providers and Clinical Facilities

7.2.2.1 MBRU is located in the heart of Dubai Healthcare City (DHCC) which is home to over 150 medical facilities, 4,000 physicians and three full size hospitals that are fully operational and open to patients. MBRU has already developed a number of agreements and partnerships with key providers in DHCC, Dubai and the UAE.

7.2.2.2 These agreements underscore the desire of the parties to collaborate on matters of medical education, research and service provision. Currently, there are agreements with, or letters of support from Dubai Health Authority, Mediclinic Middle East, Moorfields Eye Hospital and Sulaiman Al Habib Hospital. Academic partnerships and affiliation agreements are in place with Mediclinic Middle East and Al Jalila Children's Specialty Hospital. Similar agreements are being developed with the Dubai Health Authority and Ministry of Health and Prevention

7.3 Library Resources

The Al Maktoum Medical Library (AMML) supports MBRU’s students, medical and academic as well as the wider medical community, by providing access to quality and authoritative information resources in the field of medicine and research. Located on the first and second floor of MBRU, the state-of-the-art library offers a collection of point of care resources and medical education databases and provides spaces for quiet study as well as group and collaborative study for members. In addition, its facilities include a reading room, study lounges and pods, meeting rooms and an Information Commons.

The Library is a modern 30,000 square feet facility. AMML maintains over 3000 print books, more than 250 print journals and subscription to a range of electronic

resources including e-Journals and eBooks covering a wide range of medicine and allied health topics, bringing a wealth of up-to-date and reliable information to users. The Library also has multiple copies of course core textbooks to support the curriculum at MBRU. Library electronic resources can be accessed remotely using the student’s university email ID and password. Library resources include: More than 24 databases covering 11,000 electronic journals, and more than 10,000 electronic books. The Library has developed an extensive network for sharing educational resources and journals with other libraries in the region. The Library databases also have 18 Core Databases including Acland Anatomy, Visible Body, BMJ Clinical Summaries and Web of Science.

The Library's hours of operation	
Sunday - Wednesday	8:00 am – 9:30 pm
Thursday	8:00 am – 5:00 pm
Saturday	8:30 am – 4:00 pm
Friday and Public Holidays	Closed





New students will receive an induction into using the Library and its online facilities as part of orientation, and librarians are available throughout the academic year to help students locate and use the materials and facilities they require. The regulations for use of the Library facilities are available in the Student Handbook (Section 2.7). Library services include reference service, photocopying and printing facilities, library training and orientations, and document request and delivery.



7.4 Educational Technology

7.4.1 e-Learning Management System (LMS): The University has subscribed to 'Desire2Learn' as the platform for the LMS.

7.4.2 Registration and enrollment: All students management records will be on an electronic platform called 'PowerCampus'.

7.4.3 ExamSoft platform is used for conducting electronic examinations, archiving question banks and analyzing results.

7.4.4 PathXL software provides virtual microscopic teaching in histology, anatomic pathology and hematology.



7

**PARTNERSHIPS &
COLLABORATIONS**

8. PARTNERSHIPS AND COLLABORATIONS

MBRU has a number of collaborative agreements and partnerships with educational, research and service institutions both within and outside the UAE. Such partnerships aim at enhancing the quality of MBRU's educational programs, widening the University network and expanding the University outreach.

Queen's University Belfast

MBRU has an academic partnership with Queen's University Belfast (QUB) in the United Kingdom. QUB is the ninth oldest university in the United Kingdom and is a member of the UK's Russell Group of leading research-intensive universities.

The goal of the partnership provides quality assurance through offering advice on strategic planning, organization and governance of the University and its Colleges, as well as infrastructure and educational resources development, development of curriculum, faculty recruitment, senior staff recruitment, student recruitment and faculty development programs. The curriculum is developed by MBRU.

Mediclinic Middle East

Mediclinic Middle East is part of Mediclinic International, one of the top ten listed private healthcare groups in the world, operating 74 hospitals and 30 clinics across four countries, including 51 hospitals in South Africa and Namibia, 17 hospitals in Switzerland (under the name Hirslanden) and 6 hospitals and 24 clinics in the UAE. Mediclinic City Hospital

in Dubai Healthcare City currently has 229 beds across a range of specialties and is located across from MBRU.

MBRU has an academic affiliation agreement with Mediclinic Middle East to advance their common passion for medical and healthcare education. Under this agreement, Mediclinic Middle East will make its excellent healthcare facilities and highly trained specialist physicians available for the training of MBRU students. Mediclinic Middle East will assign prepared adjunct faculty members as supervisors for MBRU students who will be embedded in the healthcare teams and participate in healthcare delivery under supervision and with graded responsibilities according to their skills and experience. The training will be based on a jointly developed program with clearly defined learning outcomes.

Dubai Health Authority

The Dubai Health Authority is the major public sector healthcare provider in Dubai. It belongs to the Dubai Government. The healthcare system includes four hospitals and 14 Primary Healthcare Centers supported by a full range of ancillary services. Service is provided in all the core specialties and sub-specialties.

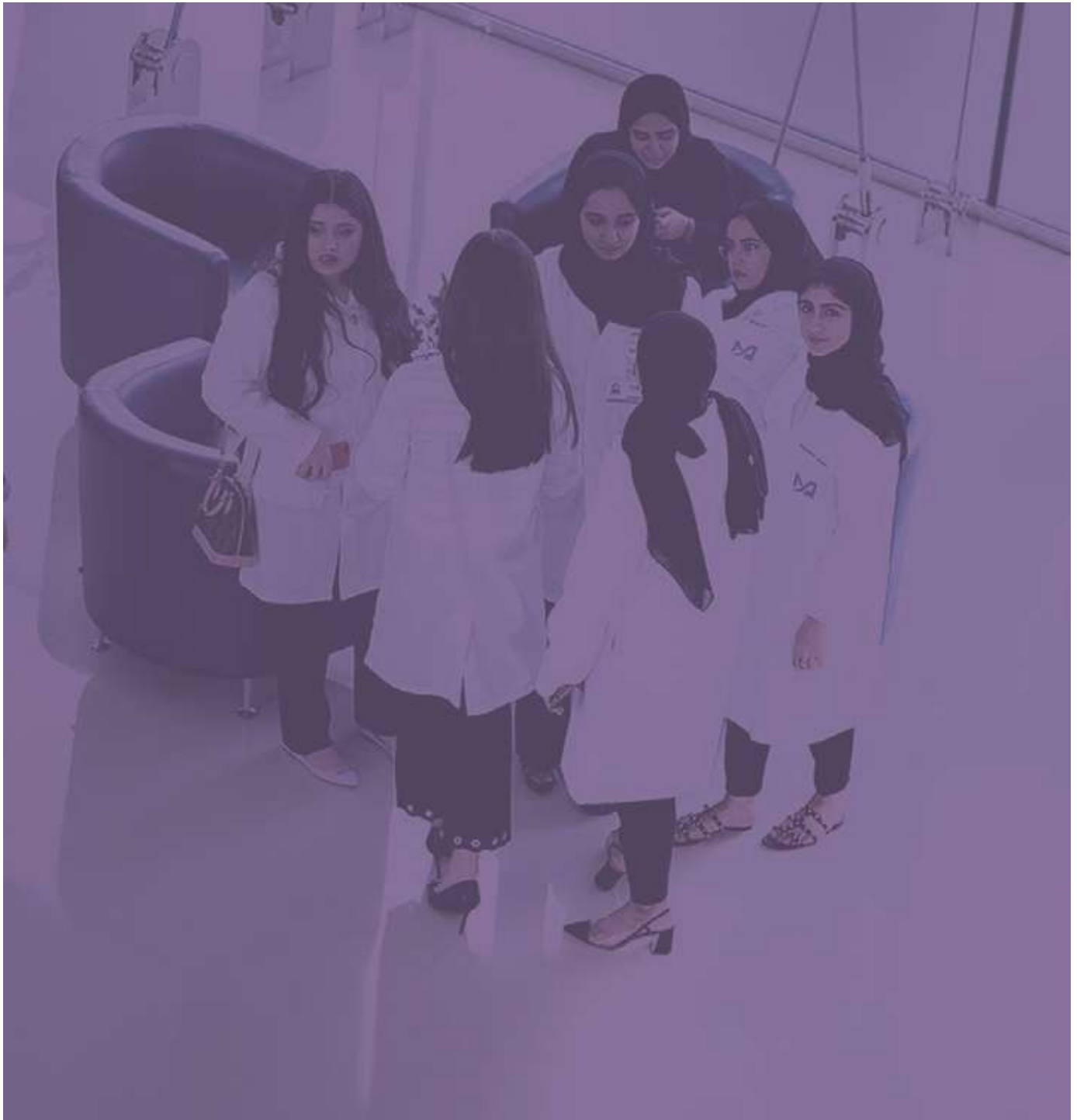
MBRU has signed a Memorandum of Understanding with DHA to provide students with clinical experiences.

Al Jalila Children's Specialty Hospital

MBRU has an academic affiliation agreement with Al Jalila Children's Specialty Hospital to advance their common passion for medical and healthcare education. Under this agreement, Al Jalila Children's will make its excellent healthcare facilities and highly trained specialist physicians and allied healthcare professionals available for the training of MBRU students.

Al Jalila Children's is the first dedicated children's hospital in the United Arab Emirates. The state of the art medical facility was created under the directives of His Highness Sheikh Mohammed Bin Rashid Al Maktoum, Vice President and Prime Minister of the UAE, and Ruler of Dubai, to affirm his belief that all children should have an equal opportunity for success in life, and the treatment of

children suffering from illness or disease should not be subject to geographical chance. The vision of His Highness is to have Al Jalila Children's one among the top 10 pediatric hospitals in the world. Inaugurated on November 1, 2016, Al Jalila Children's is an ultramodern hospital that aims to be the driving force behind the tertiary and quaternary care facility in the region. The hospital's highly qualified medical and clinical experts are setting new standards for healthcare excellence on a local and regional level. Al Jalila Children's comprises 200 beds in a child and family friendly environment.



9

ADMISSIONS POLICIES

9. ADMISSIONS POLICIES

MBRU's admissions policy and procedures are detailed in the Student Handbook (Section 2.1).

The general minimum admissions criteria for August 2020 entry are set out below:

Admissions Criteria to College of Nursing and Midwifery (MSc Programs):

Potential students to the MSc in Pediatric Nursing and Cardiovascular Nursing Programs must meet the academic entry criteria for postgraduate level study and be currently working in the relevant specialism. Employers are required to indicate their support of all staff entering the program. The admission requirements for the program are that applicants:

1. Hold a Registered Nurse License as certified by the appropriate nursing licensing authority.
2. Have at least one-year (full time equivalent) post-registration experience specific to the area of Specialist Practice being undertaken.
3. Hold a Bachelor of Nursing degree or equivalent with a minimum GPA of 3 for regular admission.
4. Are permitted and potentially supported by their employer.

5. Available to undertake the course on the date of commencement.

6. Have evidence of meeting the good health and character requirements.

Applicants whose first language is not English are required to have a minimum IELTS band of 6 (with minimum 6.0 in each skill) or an equivalent qualification acceptable to the University and achieved within the last two years.

Evidence of these qualifications must be presented before an offer of admission is issued.

Note: All MSc Nursing applicants will need to go through an interview with a selection panel and will not need to sit for an MMI.

10

FINANCIAL POLICIES

11

TUITION AND OTHER FEES



10. FINANCIAL POLICIES

The Department of Student Services and Registration (DSSR) in collaboration with the Finance Department supports students with financial documentation (e.g. statement of fees) and can advise on issues relating to tuition fees, scholarships, and financial aid.

Note:

- Students facing financial hardship may request from DSSR to reschedule payments on an exceptional basis.
- Students with external scholarships for tuition charges must provide written confirmation of the scholarship as specified in the Schedule of Tuition and Fees before the payment deadline. Sponsored students who do not submit the required confirmation of sponsorship and continue in enrollment will assume personal responsibility for all tuition charges and applicable fees.
- Students who fail to pay all applicable tuition charges by the established payment deadline(s) or are late in paying their fees may be subject to denial of academic services or cancellation of current and/or future registration.
- Unless otherwise specified, fees are due and payable within 15 days of the invoice date.
- Payments of tuition and fees may be made by means specified in the published Schedule of Tuition and Fees, and notification of tuition and fee charges by the Finance Department via the student's university email address constitutes official notice of financial liability.

All additional policies on tuition fee refunds are detailed in the Student Handbook (Section 2.2).

10.1 TUITION AND OTHER FEES

10.1.1 The University will annually publish the tuition and fees schedule. Any changes in tuition and fees are approved by the University Academic Council and the University Board of trustees and communicated to students at least six months before taking effect. Below is the tuition and fees schedule for Academic Year 2020-2021:

2020-2021	Amount	Schedule
Seat reservation fee (non-refundable) offer	AED 10,000	At time of acceptance of offer
Tuition fees	AED 130,000	July 2, 2020
Total annual tuition fee	AED 140,000	

10.1.1.1 The yearly tuition covers all educational expenses, recreational, library, insurance, computer, and lab activities. It does not cover the cost of clinical electives taken inside or outside the country. It includes the placement fee at Belfast Health and Social Care Trust.

10.1.1.2 Tuition charges are due and payable in full at the specified deadlines of each academic term as per the Schedule of Tuition and Fees. The final responsibility for payment of tuition and fees charged rests with the individual student and their sponsors.

10.1.1.3 Students facing financial hardship could ask the Department of Student Services and Registration to reschedule payments on an exceptional basis.

10.1.1.4 Students with external scholarship for tuition charges must provide written confirmation of the scholarship as specified in the Schedule of Tuition and Fees before the payment deadline. Sponsored students who do not submit the required confirmation of sponsorship and continue in enrollment will assume personal responsibility for all tuition charges and applicable fees.

10.1.1.5 Students who fail to pay all applicable tuition charges by the established payment deadline(s) or who are late in paying their fees may be subject to denial of academic services or cancellation of current and/or future registration.

10.1.1.6 Unless otherwise specified, fees are due and payable within 15 days of the invoice date.

10.1.1.7 Payments of tuition and fees may be made by means specified in the published Schedule of Tuition and Fees, and notification of tuition and fee charges by the Finance Department via the student's university email address constitutes official notice of financial liability.

All additional policies on tuition fee refunds are detailed in the Student Handbook (Section 2.2).



11

**STUDENT SERVICES
& REGISTRATION**

12

STUDENT CODE OF CONDUCT

13

STUDENT GRIEVANCE POLICY

11. STUDENT SERVICES AND REGISTRATION

The Department of Student Services and Registration (DSSR) provides assistance to students on admissions, scheduling, registration, student records, counseling, accommodation, student events and

activities, sports and recreation, career development, and student support. Detailed information on each service is provided in the Student Handbook (Section 1).



12. STUDENTS CODE OF CONDUCT

The Student Handbook sets out details on what students can expect from MBRU and the College of Nursing and Midwifery during their time of study in the University, and their responsibilities. Details on General Conduct, Dress Code policy, co-education conduct and conduct in the classroom are also presented in the Student Handbook (Section 2.11).

13. STUDENT GRIEVANCE POLICY

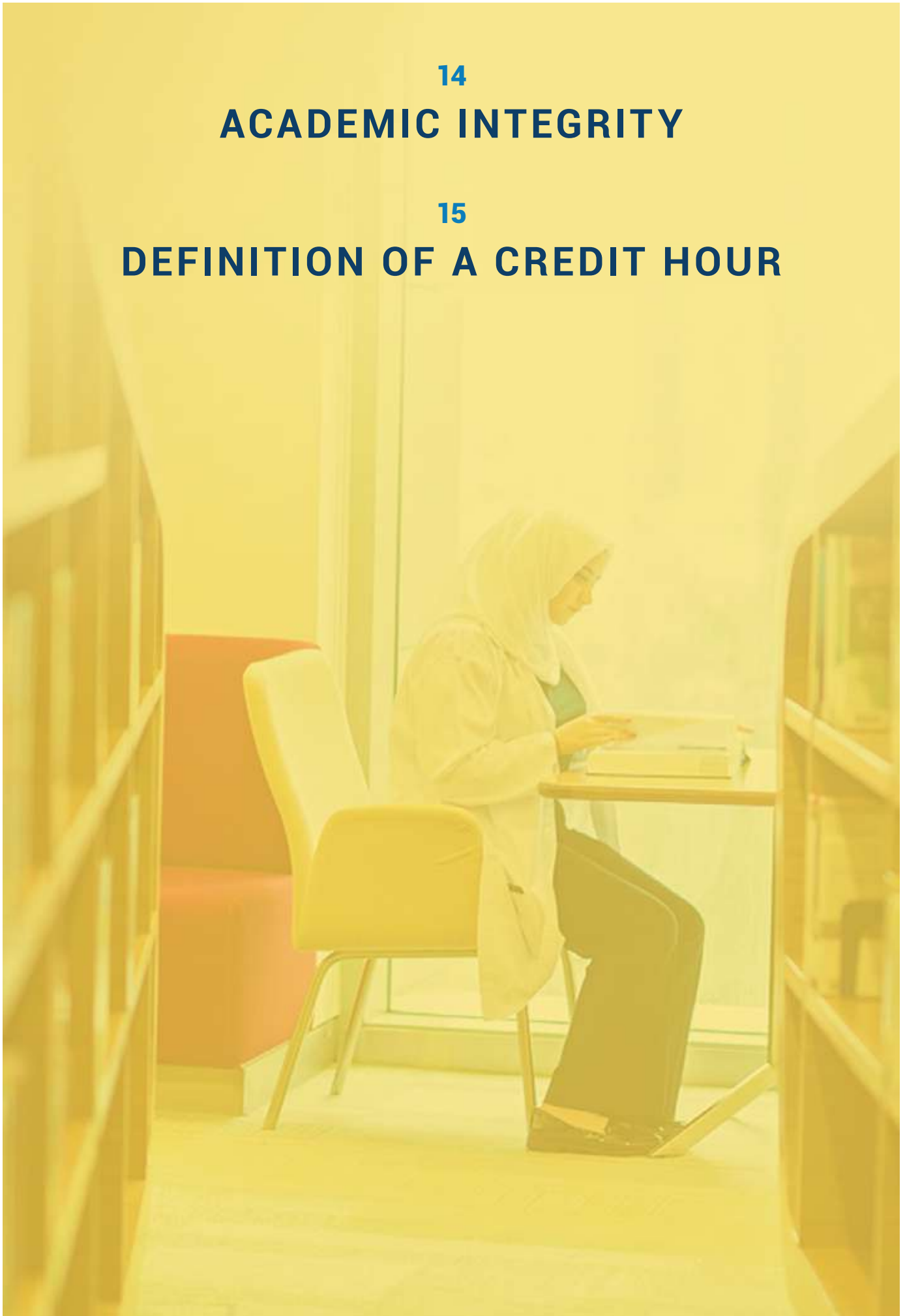
The Student Grievance Policy and appeal mechanisms are provided in the Student Handbook (Section 4).

14

ACADEMIC INTEGRITY

15

DEFINITION OF A CREDIT HOUR



14. ACADEMIC INTEGRITY

The Student Disciplinary and Appeals Procedures relating to both academic and non-academic offenses are available within the Student Handbook (Section 3).

15. DEFINITION OF A CREDIT HOUR

The credit system conventionally uses hours (contact and credit) per week to measure student load. On the other hand, clinical placements are weighted by the number of weeks in a placement.

One credit hour is equal to one contact hour (60 minutes) of lecture time, 2 contact hours (120 minutes) of a practical or a tutorial, or three-four contact hours (180-240 minutes) of field work or clinical work in a 15-17 week semester. A team-based learning (TBL) session is considered to be a tutorial.

For example, in a 15-week semester, a course of three credits where there are two lectures and one tutorial every week will have 30 contact hours of lecture time and 30 contact hours of tutorial time (i.e. 60 contact hours per semester). A similar three credit hour course but with three lectures per week will have 45 contact hours per semester.



16

**OUTLINE OF THE MSC
NURSING PROGRAMS**

17

**NURSING MSC PROGRAMS GOALS,
LEARNING OUTCOMES AND
COMPLETION REQUIREMENTS**

18

GENERAL EDUCATION

16. OUTLINE OF THE MSC NURSING PROGRAMS

The Cardiovascular Nursing and Pediatric Nursing programs are college degrees in nursing which require the successful completion of one year full-time or two years part-time of study.

Each year is comprised of approximately 52 weeks of study. Each program comprises of three core modules and three specialist modules.

MSc Cardiovascular Nursing		MSc Pediatric Nursing		Summer for both Master's Programs	
Semester 1	Semester 2	Semester 1	Semester 2	450 hours of Clinical Nursing Practice	Extended Portfolio / Dissertation
Core 1: Health Care Assessment	SP2: Cardiovascular Nursing	Core 1: Health Care Assessment	SP2: Pediatric Nursing		
Core 2: Research Methods & Statistics	SP2: Leadership & Management	Core 2: Research Methods & Statistics	SP2: Leadership & Management		
SP1: Cardiovascular Nursing	SP3: Cardiovascular Nursing	SP1: Pediatric Nursing	SP3: Pediatric Nursing		

16. NURSING MSC PROGRAMS GOALS, LEARNING OUTCOMES AND COMPLETION REQUIREMENTS

17.1 MSc. in Cardiovascular Nursing

17.1.1 Program Goals

Graduate education is an important part of MBRU's mission to advance health in the UAE and the region, through an innovative and integrated academic health system that is nationally responsive and globally connected, serving individuals and communities; hence MBRU's application to establish a graduate program of high quality leading to an MSc Cardiovascular Nursing.

Not only will the program engage with, and support, practice; it will also enable students to review their own practice and share balanced and critical findings that contribute towards improving the quality and efficiency of cardiovascular nursing services.

A key goal of the College of Nursing and Midwifery is to ensure that students, as potential specialist nurse practitioners, will be enabled to deliver care and provide clinical skills across all areas of nursing and in agreed clinical settings. The

program will focus on the acquisition of specific skills, proficiencies and knowledge necessary to support continued practice development for the nursing workforce in the UAE and the region.

Cardiovascular disease (CVD) is a critical global health issue, and cardiovascular nurses play a vital role in decreasing the global burden and contributing to improving outcomes in individuals and communities. Chronic and acute disease management is, in many circumstances, best delivered via nurse-led provision allowing time to provide education and support for patients and their immediate families. Specialist Cardiac nursing takes place within various spheres of health care: primary, secondary, and tertiary care and cardiac nursing expertise tends to fall into four domains: health promotion, cardiac prevention and rehabilitation, acute/chronic and episodic care, and palliative care.

Specialist cardiovascular nurses require the knowledge, skills, and resources that will enable them to function as leaders in addressing CVD within these domains. The goal of the MSc in Cardiovascular Nursing program is to prepare specialist nurses for positions of clinical based leadership through the acquisition of specific education, training, well-defined competencies and specific skills. The net effect of this should be a growing specialist nurse workforce that is 'fit for purpose', knowledgeable, clinically competent, thoughtful, critical, and articulate.

17.1.2 Program Learning Outcomes

(a) Knowledge

On successful completion of this program the graduate will be able to:

1. demonstrate critical awareness and understanding of pathophysiology to support advanced clinical decision-making appropriate to advanced and specialist nursing practice for patients with cardiovascular disease and associated conditions
2. critically evaluate and apply relevant research, national and international standards and guidelines to local care provision for patients with cardiovascular conditions
3. critically appraise and synthesize sources of information when undertaking a systematic and comprehensive assessment of patients with cardiovascular disease, to support assessment and diagnostic investigations

(b) Skills

On successful completion of this program the graduate will be able to:

1. interpret and critically evaluate the patients' response to pharmacological, non-pharmacological and self-management interventions relevant to the management of patients with specific cardiovascular conditions
2. critically evaluate underlying cardiovascular risk factors and integrate these within the context of primary and secondary preventative health care systems

(c) Competence

On successful completion of this program the graduate will be able to:

(a) Autonomy and Responsibility

1. demonstrate leadership capacity and personal expertise to work independently and as part of a team in a range of cardiovascular-related clinical contexts

2. Learn from experiences gained in different contexts and assimilate new knowledge and skills into the cardiovascular nursing environment

(b) Self Development

1. explore the prevention, diagnosis, acute and long-term management of common cardiovascular disease and conditions

2. develop and apply underpinning knowledge, skills and attitudes at an advanced and specialist nursing practice level to the management of patients with cardiovascular disease

(c) Role in Context

1. critically review the social, psychological and palliative care issues which can impact upon patients with cardiovascular disease and also review the implications for the patient and their families

2. demonstrate a range of complex nursing skills, techniques and practices that lead and direct the care of patients with cardiovascular disease



A key goal of the College of Nursing and Midwifery programs is to ensure that students, as potential specialist nurse practitioners, will be enabled to deliver care and provide clinical skills across all areas of nursing and in agreed clinical settings. The program will focus on the acquisition of specific skills, proficiencies and knowledge necessary to support continued practice development for the nursing workforce in the UAE and the region.

Pediatric nursing's goal is to ensure that all children develop and grow to their full potential. A pediatric nurse cares for sick and injured children, administers immunizations, monitors development, and counsels parents. These responsibilities are similar to those of other nurses; however, because of their patients' young age and developmental level, pediatric nurses must take a different approach, understanding that children's bodies react differently to medications, illnesses, and injuries, and adjusting proportions accordingly. For example, advanced training prepares the pediatric nurse to be able to interpret investigative scans and test results and create a treatment plan based on those results. Working with children as a specialist pediatric nurse requires a comprehensive understanding of the child's unique physical, emotional, and cognitive developmental levels. A strong background in child development prepares nurses to be able to adjust their approach so the child and their family feel safe.

The MSc. In Pediatric Nursing program is focused on the enhancement of learning, which is evidence-based, and promotes independent study and current research development, diversity, and culture. The program will demonstrate that nurses with specialist academic education and training can work independently, within a multidisciplinary context to deliver the highest quality of nursing care to the population of the UAE and the region.

17.2.2 Program Learning Outcomes

(a) Knowledge

On successful completion of this program the graduate will be able to:

- 1 assess the health and development of children in different age groups
- 2 identify factors which contribute to or inhibit health in childhood, including the effects on the family and the wider environment
- 3 recognize the signs of acute and chronic illness in childhood and the significance of these towards developing child health and potentially in later life
- 4 assess, plan, implement and evaluate care formulated from decisions based on nursing principles and up-to-date evidence/research

(b) Skills

On successful completion of this program the graduate will be able to:

- 1 demonstrate safe and effective practice in the administration and disposal of drugs used in the care of the sick child and manage multiple therapies in the context of continuously evolving patient and family needs
- 2 competently attain physiological, psychosocial, cultural, developmental, and spiritual data based on the patient's condition using all available and appropriate resources
- 3 communicate with the child and family in ways that are appropriate, and take specific account of their age, ability, language, culture and the context of the

situation, including the degree of anxiety and stress

4 demonstrate empathy with the child's and family's situation and promote coping and adaptation whenever possible

(c) Competence

On successful completion of this program the graduate will be able to:

(1) Autonomy and Responsibility

- a. demonstrate leadership capacity and personal expertise to work independently and as part of a team in a range of pediatric related clinical contexts
 - b. promote the participation of the child in decisions that affect them, according to their age and ability.
- #### **(2) Self Development**
- a. support the child's family to share in decision-making about the child's care and to take responsibility for their health
 - b. analyze and implement management and leadership theories and demonstrate their application to specialist nursing practice

(3) Role in Context

- a. critically review professional and legal issues for children's nursing and apply these to clinical practice.

17.2.3 Program Completion Requirements

Graduation with an MSc. in Pediatric Nursing degree requires the student to successfully complete all core and specialist practice modules, a clinical portfolio, and a dissertation.

18 General Education

There are no General Education requirements for the Cardiovascular and Pediatric Nursing programs.

19

STRUCTURE & GOALS OF THE MSC NURSING PROGRAMS



19. STRUCTURE AND GOALS OF THE MSc NURSING PROGRAMS

This section sets out an overview of the structure and goals of the MSc Cardiovascular and Pediatric Nursing programs.

19.1 MSc. Nursing Programs Curriculum

The MSc in Cardiovascular and Pediatric Nursing programs are purposefully developed to meet the specific development needs of practitioners working at a senior or advanced level. The curriculum provides flexible options for study and is designed to support students to learn while applying their knowledge to practice.

Not only will the programs engage with, and support, practice; they will also enable students to review their own practice and share balanced and critical findings that contribute towards improving the quality and efficiency of clinical nursing practice provision. Modules will be delivered through a range of blended learning strategies with 'in person' and online teaching.

Students will also benefit from an exciting and challenging educational experience to which the program teams will contribute through the organization of specialist innovative modules and support of focused clinical practice learning.

19.2 Curriculum Structure

The MSc in Cardiovascular and Pediatric Nursing programs will be offered full-time over 12 months (plus 3 months' dissertation completion), and part-time over 24 months.

The programs consist of six modules (three core modules and three specialist specific modules), supported clinical practice with portfolio completion (to be undertaken in the Belfast Health and Social Care Trust, Northern Ireland), and a dissertation evidencing a critical and detailed review of innovative or emerging areas of their professional work.

The diagrams below illustrate the curriculum structure of the MSc Cardiovascular and Pediatric Nursing programs.

The diagrams below illustrate the curriculum structure of the MSc Cardiovascular and Pediatric Nursing programs.

The MScs in Cardiovascular and Pediatric Nursing Programs Outline and Details

MSc Cardiovascular Nursing									
Course Title	Course Code	Credits	Availability	Duration	Prerequisite	Course Type	Nursing		
							Assignments %	Practice based %	Examination %
Core Courses									
Advanced Clinical and Physiological Assessment Skills	NURS7301	3	S1 or S2	12 weeks	Prerequisite for Clinical Practicum (NURS7610)	Core	80%	20% OSCE	
Applied Research methods and Statistics in Healthcare	NURS7302	3	S1 or S2	12 weeks	Co-requisite for Dissertation (NURS7601)	Core	70%		30%
Successful Leading for Nursing and Health Care Professionals	NURS7303	3	S1 or S2	12 weeks	None	Core	100%		
Acute care of the Cardiovascular Patient	NURS7307	3	S1 or S2	12 weeks	None	Specialist	50%		50%
Specialist Cardiovascular Nursing of Patients with Heart Failure, Arrhythmia and Inherited Diseases	NURS7308	3	S1 or S2	12 weeks	None	Specialist		305	70%
Optimizing Cardiovascular Health and Preventing Disease	NURS7309	3	S1 or S2	12 weeks	None	Specialist	100%		
Dissertation	NURS7601	6	S1, S2 and S3	One Calendar year	None	Core	100%		
Clinical Practicum and Portfolio	NURS7610	6	S3	450 hours	None	Core	80% Pass /Fail 3,000-word Portfolio	20% seminar	

MSc Cardiovascular Nursing									
Course Title	Course Code	Credits	Availability	Duration	Prerequisite	Course Type	Nursing		
							Assignments %	Practice based %	Examination %
Core Courses									
Advanced Clinical and Physiological Assessment Skills	NURS7301	3	S1 or S2	12 weeks	Prerequisite for Clinical Practicum (NURS7610)	Core	80%	20% OSCE	
Applied Research methods and Statistics in Healthcare	NURS7302	3	S1 or S2	12 weeks	Co-requisite for Dissertation (NURS7601)	Core	70%		30%
Successful Leading for Nursing and Health Care Professionals	NURS7303	3	S1 or S2	12 weeks	None	Core	100%		
Promoting Children and Young People's Healthcare in the Hospital and the Community	NURS7304	3	S1 or S2	12 weeks	None	Specialist	80%	20% Practice	
Care of the Critically Ill Child	NURS7305	3	S1 or S2	12 weeks		Specialist	100% Pass/Fail		
Palliative Support for Children and their Families	NURS7306	3	S1 or S2	12 weeks		Specialist	100%		
Dissertation	NURS7601	6	S1, S2 and S3	One Calendar year	None	Core	100%		
Clinical Practicum and Portfolio	NURS7610	6	S3	450 hours	None	Core	80% Pass/Fail 3,000-word Portfolio	20% seminar	

20

SEQUENCING OF COURSES FOR THE MSC NURSING PROGRAMS

21

COURSE DESCRIPTIONS



20. SEQUENCING OF COURSES FOR THE MSC NURSING PROGRAMS

			ACADEMIC YEAR 2020-21 MSc Cardiovascular Nursing																																																																																																																													
			Aug '20									Sept '20									Oct '20									Nov '20									Dec '20									Jan '21									Feb '21									Mar '21									Apr '21									May '21									Jun '21									Jul '21									Aug '21									Sept '21								
Program Week	1	2	3	4	5	6	7	8	9	10	11	12	13	14	15	16	17	18	19	20	21	22	23	24	25	26	27	28	29	30	31	32	33	34	35	36	37	38	39	40	41	42	43	44	45	46	47	48	49	50	51	52	53	54	55	56	57																																																																							
Week (start Date)	30	6	13	20	27	4	11	18	25	1	8	15	22	29	6	13	20	27	3	10	17	24	31	7	14	21	28	4	11	18	25	1	8	15	22	29	6	13	20	27	4	11	18	25	1	8	15	22	29	5	12	19	26																																																																											
Induction	[Color-coded blocks]																																																																																																																															
N700 (Successful Leading for Nursing and Health Care Professionals)	[Color-coded blocks]																																																																																																																															
N701 (Acute care of the patient with cardiovascular illness including surgery and	[Color-coded blocks]																																																																																																																															
N702 (Applied Research Methods and Statistics in Health Care)	[Color-coded blocks]																																																																																																																															
N703 (Specialist Cardiovascular Nursing of Patients with Heart Failure, Arrhythmia and	[Color-coded blocks]																																																																																																																															
N701 (Advanced Clinical and Physiological Assessment Skills)	[Color-coded blocks]																																																																																																																															
N709 (Optimising Cardiovascular health and Preventing Disease)	[Color-coded blocks]																																																																																																																															
Clinical	[Color-coded blocks]																																																																																																																															
Dissertation	[Color-coded blocks]																																																																																																																															

			ACADEMIC YEAR 2020-21 MSc Pediatric Nursing																																																																																																																													
			Aug '20									Sept '20									Oct '20									Nov '20									Dec '20									Jan '21									Feb '21									Mar '21									Apr '21									May '21									Jun '21									Jul '21									Aug '21									Sept '21								
Program Week	1	2	3	4	5	6	7	8	9	10	11	12	13	14	15	16	17	18	19	20	21	22	23	24	25	26	27	28	29	30	31	32	33	34	35	36	37	38	39	40	41	42	43	44	45	46	47	48	49	50	51	52	53	54	55	56	57																																																																							
Week (start Date)	30	6	13	20	27	4	11	18	25	1	8	15	22	29	6	13	20	27	3	10	17	24	31	7	14	21	28	4	11	18	25	1	8	15	22	29	6	13	20	27	4	11	18	25	1	8	15	22	29	5	12	19	26																																																																											
Induction	[Color-coded blocks]																																																																																																																															
N700 (Successful Leading for Nursing and Health Care Professionals)	[Color-coded blocks]																																																																																																																															
N704 (Promoting Children's and Young People's Healthcare in the Hospital and the Community)	[Color-coded blocks]																																																																																																																															
Tuesday Morning for tutorials	[Color-coded blocks]																																																																																																																															
N702 (Applied Research Methods and Statistics in Health Care)	[Color-coded blocks]																																																																																																																															
N705 (Care of the Critically Ill Child) Monday for Tutorial	[Color-coded blocks]																																																																																																																															
N701 (Advanced Clinical and Physiological Assessment Skills)	[Color-coded blocks]																																																																																																																															
N706 (Palliative support for children and their families) Wednesday Tutorials	[Color-coded blocks]																																																																																																																															
Clinical	[Color-coded blocks]																																																																																																																															
Dissertation	[Color-coded blocks]																																																																																																																															

Induction and Orientation	[Color]
Winter/ spring break	[Color]
Formative Assessment	[Color]
Core Courses	[Color]
Speciality Courses	[Color]
Exam	[Color]
Assignment Submission	[Color]
OSCE	[Color]
Dissertation	[Color]
clinical Belfast	[Color]
Clinical Dubai Orientation	[Color]
Academic Year End	[Color]
Dissertation submission	[Color]
Online Learning (Asynchronous on LMS)	[Color]
Online webinar (synchronous 3 per module 2-4 PM Dubai Time)	[Color]

21. COURSE DESCRIPTIONS

This section details course descriptions for the MScs in Cardiovascular and Pediatric Nursing programs. Please refer to the corresponding course handbooks for more specific detail.

21.1 Core Courses – MSc. in Cardiovascular and Pediatric Programs

Core Course 1 – NURS7301 Advanced Clinical and Physiological Health Assessment Skills

The purpose of health assessment is to gather information from a variety of sources to identify client health needs and illness status, and to plan, implement and evaluate appropriate holistic management. This is a joint process between the nurse and the client and introduces the nurse as the first point of contact in a variety of care settings. Using a range of interventions, students are given the opportunity to complete an assessment of the health of clients in their care. The course aims to integrate theoretical knowledge that underpins the requisite skills necessary for competent health assessment. Consolidation of the taught skill is expected to continue into the clinical environment and continue throughout the duration of the course of study.

Core Course 2 – NURS7302 Research Methods and Statistics Applied to Clinical Practice

This course provides the background for an understanding of research methodology and the implementation of research

into nursing practice. Students will be introduced to the fundamental principles and methods of research, data collection, interpretation and presentation. Students will be able to recognize the role of quantitative methods in understanding clinical nursing questions, especially in the context of responsible decision-making for the specialist nurse practitioner.

Core Course 3 – NURS7303 Successful Leading for Nursing and Health Care Professionals

This course provides the background for understanding leadership as an integral component part of the role of the specialist nurse. An essential part of management is co-coordinating the activities of these groups and directing the efforts of members towards the goals and objectives of the organization. This involves the process of leadership and the choice of appropriate forms of behavior in different contexts. Effective nurse/ educational managers must understand the nature of leadership and the factors which determine the quality of the leadership relationship.

Clinical Practicum – NURS7610

Students are expected to attend and treat patients in a healthcare setting in Dubai and the Belfast Trust. A practice placement is an integral element of the MBRU MSc course. This opportunity allows students to experience and be involved in the delivery of evidence-based, holistic nursing care for patients in Belfast. As part of the program, students be placed in

a specialist health care facility in the UAE, before spending 450 hours spread over two clinical placements in the Belfast Health and Social Care Trust. While on placement students will have the opportunity to provide hands-on nursing care to patients in the clinical setting.

Dissertation – NURS7601

The dissertation is the final stage of the MSc degree and provides the student with the opportunity to show that they have gained the necessary skills and knowledge in order to organize and conduct a substantive investigative project.

21.2 Specialist Courses – MSc. In Cardiovascular Nursing

Specialist Course 1 – NURS7307 Acute Care of the Patient with Cardiovascular Illness including Surgery and Interventional Procedures

This course will introduce the students to the principles and concepts of specialist cardiac nursing. Its main focus is acute care of the patient with cardiovascular illness who requires interventional procedures and/or surgery. Students will be introduced to the normal structure and function of the heart, the pathophysiology of atherosclerosis and acute coronary syndrome. Key clinical investigations including ECG and ABG interpretation will be covered in-depth, and students will gain a comprehensive understanding of various cardiac interventions and the associated nursing care. Principles of cardiac surgery and care of the patient requiring surgery will be addressed. The course will

incorporate recognition of the deteriorating cardiac patient and management of a cardiac arrest. Lectures and tutorials will address theoretical content utilizing case studies to assist with the application of theory to practice. Practical application of assessment, emergency and non-technical skills will be conducted through a practical face-to-face workshop incorporating simulation. Designed for registered practitioners in cardiac healthcare this course will help develop nurses' knowledge, expertise and understanding in this specialist area.

Specialist Course 2 – NURS7308 Specialist Cardiovascular Nursing of Patients with Heart Failure, Arrhythmia and Inherited Disease

This course aims to provide an understanding and critical appraisal of the care of patients with long term cardiovascular conditions. Students will be introduced to the evidence-based management of a range of conditions with particular reference to establishing the link between genetics and cardiovascular disease, exploring the management and optimization of the health of patients presenting with myocardial dysfunction including the use of pharmacotherapeutics. The course will furthermore critically appraise the Specialist Nurses' role in the management of the target client group.

Specialist Course 3 – NURS7309 Cardiovascular Disease Prevention and Rehabilitation

Advanced, high-technological cardiac services are available to meet the need

of the public in maximizing their health potential and do not work in isolation. Social, economic and environmental factors are recognized as contributing causes of ill health. Nurses need to help in the empowerment of patients, encouraging partnership in accessing appropriate care packages, bridging the gap to ensure the patient is cared for holistically within a cohesive multi-disciplinary service. From primary preventative care to tertiary care the nurse in cardiology plays a vital role in contributing to a seamless service throughout the patient's journey. The aim of this course is to advance the student's knowledge and skills in cardiovascular disease prevention and rehabilitation. The specialist nurse practitioner requires to empower the patient and their family in every phase of their care, at the hospital and community level. This course builds upon the other specific specialist practice courses and emphasizes the importance of communication skills, health promotion and rehabilitation strategies when caring for the cardiac patient.

21.3 Specialist Courses – MSc. in Pediatric Nursing

Specialist Course 1 – NURS7304 Care of the Critically Ill Child

This course builds on the knowledge that students bring from their undergraduate nursing programs. The theoretical underpinning of infant, child and young person's and family health will be explored, within internationally recognized and approved primary health and community-based strategies that are designed to

promote physical, emotional, spiritual and mental health for children and young people.

Specialist Course 2 – NURS7305 Palliative Support for Children and their Families

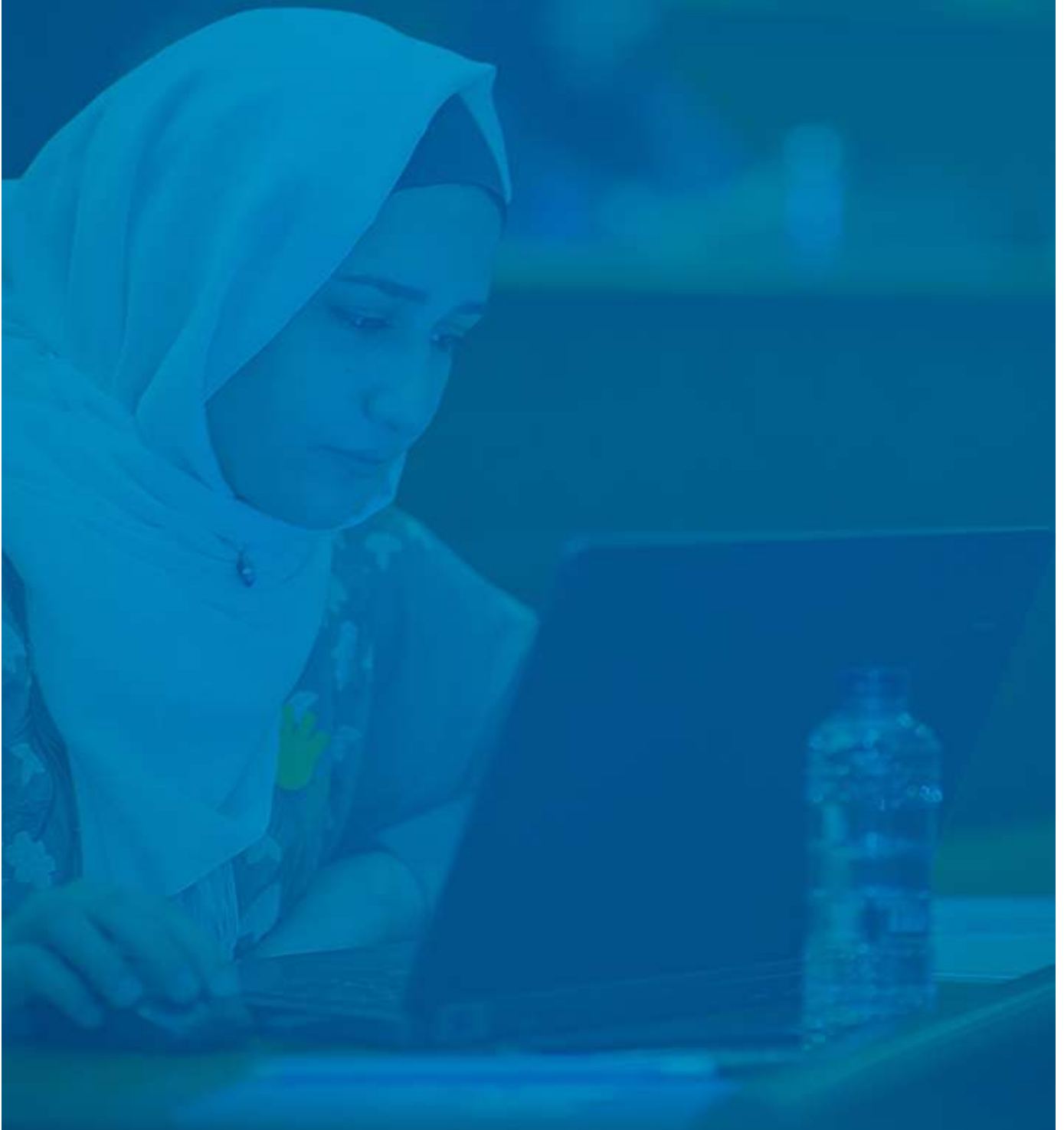
This course explores the pathophysiology that leads to critical illness in infants, children and young people. It examines the evidence base underpinning complex decision making related to critical care and the range of nursing skills required to provide holistic care to infants, children, young people and their families.

Specialist Course 3 – NURS7306 Promoting Children and Young People's Healthcare in the Hospital and the Community

This course aims to enhance students' knowledge and understanding of caring for children and families requiring a palliative approach to care. Students will be able to explore, in-depth, the experience of families from the point of diagnosis and throughout the illness trajectory. Emphasis will be on reflecting on and developing practice. Drawing on recent research, students will have the opportunity to critically discuss the complexity of care in addition to the challenges for children and families as well as professionals who care for them.

22

STUDENT ASSESSMENT & PROGRESSION



22. STUDENT ASSESSMENT AND PROGRESSION

The aim of student assessment is to satisfy student achievement and progression, promote subsequent learning through feedback, improve the quality of the curriculum (courses and programs), and evaluate the effectiveness of the teaching process.

22.1. Summary of Student Assessment and Progression Regulations

The assessment strategy for the MScs in Cardiovascular and Pediatric Nursing programs provides an approach that will deliver the optimum learning experience for students; it will promote independent learning and academic achievement. In implementing the assessment plan, the College aims to ensure that students are exposed to modern, effective assessment methods and that they get the best possible academic experience and results that reflect the individual effort and ability. The assessment will continually change and emerge and will be informed by national and international best practices. It will include examinations, structured assignment, portfolio and OSCEs. Inputting in place a clear assessment plan for the MSc programs, the University is purposefully noting that the role of assessment is not a singular activity to be undertaken on completion of a component course of study but rather a complex, joint activity between learner and teachers that supports student achievements and enhances their capacity to learn and the way that they learn. It also demonstrates institutional accountability by MBRU to each student in nurturing and facilitating

progress and highlighting, where necessary, student learning challenges. Because of the importance of the dissertation and portfolio work as capstones of the MSc Cardiovascular and Pediatric Nursing programs, more detail is given below on project and research evaluation.

The dissertation or academic supervisor will help the student in the completion of the research work which will be based on module-learned theory and clinical placement practice. The supervisor should help the student in identifying a topic for his/her research, and closely supervise and advise the student on the research work. In addition, the student's supervisor will propose an external examiner with relevant expertise.

The dissertation must be based on an original and creative body of research that makes a significant contribution to the applicable field. Upon completion of their research, students will prepare a written dissertation. Assessment will involve an external examiner (internationally recognized expert within the field of the dissertation selected from outside MBRU and QUB).

Authenticating Student Work

- The authenticity of student work at MBRU is ensured using technological platforms such as Turnitin, which is available within the Learning Management System. Program manuals outline expectations with regards to academic integrity,

professionalism, and ethical conduct. Students will be oriented on the student disciplinary policy and will sign a contract

- The award of the degree of MSc. in Cardiovascular Nursing or degree of MSc. in Pediatric Nursing is granted if the student successfully completes all phases of the program.
- As a general rule, the maximum duration within which to successfully complete the program is five years.

22.2 Guidelines

The following guiding principles in designing assessments instruments are followed by course coordinators and clinical instructors at MBRU:

- Ensuring linkage of assessment to course objectives (Knowledge, Skills, Competencies)
- Employing diverse assessment methods
- Basing their marking and grading on pre-defined outcome criteria
- Communicating assessment criteria to students
- Providing timely, meaningful, and helpful feedback to students

- Ensuring exams are proportional to the course workload
- Ensuring contextual use of assessment instruments
- Ascertaining assessment tools are appropriate for the competencies being measured
- Ascertaining standard setting is criteria-based (criterion-referenced standard)

22.3 Weights of Assessments

The weight of assessment would depend on the nature of the course and will be in alignment with the aims and objectives of the program as approved by the Assessment and Progression Committee. Table 5 provides additional details.

22.4 Grading System

MBRU uses a letter-based grading system to report course grades. Assessments are typically recorded on a percentage scale (0-100) and converted into a letter grade as outlined below.

The Grading Scheme of the MSc Cardiovascular and Pediatric Nursing Programs

Performance	Grade	Score	Quality Points
Excellent	A	95-100	4.00
Excellent	A -	90-94	3.70
Very Good	B +	85-89	3.30
Very Good	B	80-84	3.00
Good	B -	75-79	2.70
Pass (Satisfactory)	C +	70-74	2.30
Unsatisfactory (Remediation)	C	65 -69	2.00
Unsatisfactory (Remediation)	C -	60-64	1.70
Unsatisfactory (Remediation)	D +	55-59	1.30
Unsatisfactory (Remediation)	D	50-54	1.00
Fail	F	0-49	0.00

Note: Students who get a grade of C, C-, D+, D will be allowed to submit their assignment for a maximum of three attempts (initial submission plus 2 additional submission).

Grade	Description
A, A-	Exceptional performance: all course objectives achieved; objectives met in a consistently outstanding manner
B+, B	Very good performance: significantly more than the majority of the course objectives achieved (majority being at least two thirds) objectives met in a consistently thorough manner
B-	Good Performance: at least the majority of course objectives achieved; objectives met satisfactorily
C +	Satisfactory performance: at least the majority of course objectives achieved; objectives met satisfactorily
C, C-, D+, D	Below acceptable performance: less than the minimum required some course objectives but met at a less than acceptable level. Would value remediation opportunity
F	Unacceptable performance: minimum required course objectives not met; objectives not met at a minimally acceptable level; no credit earned

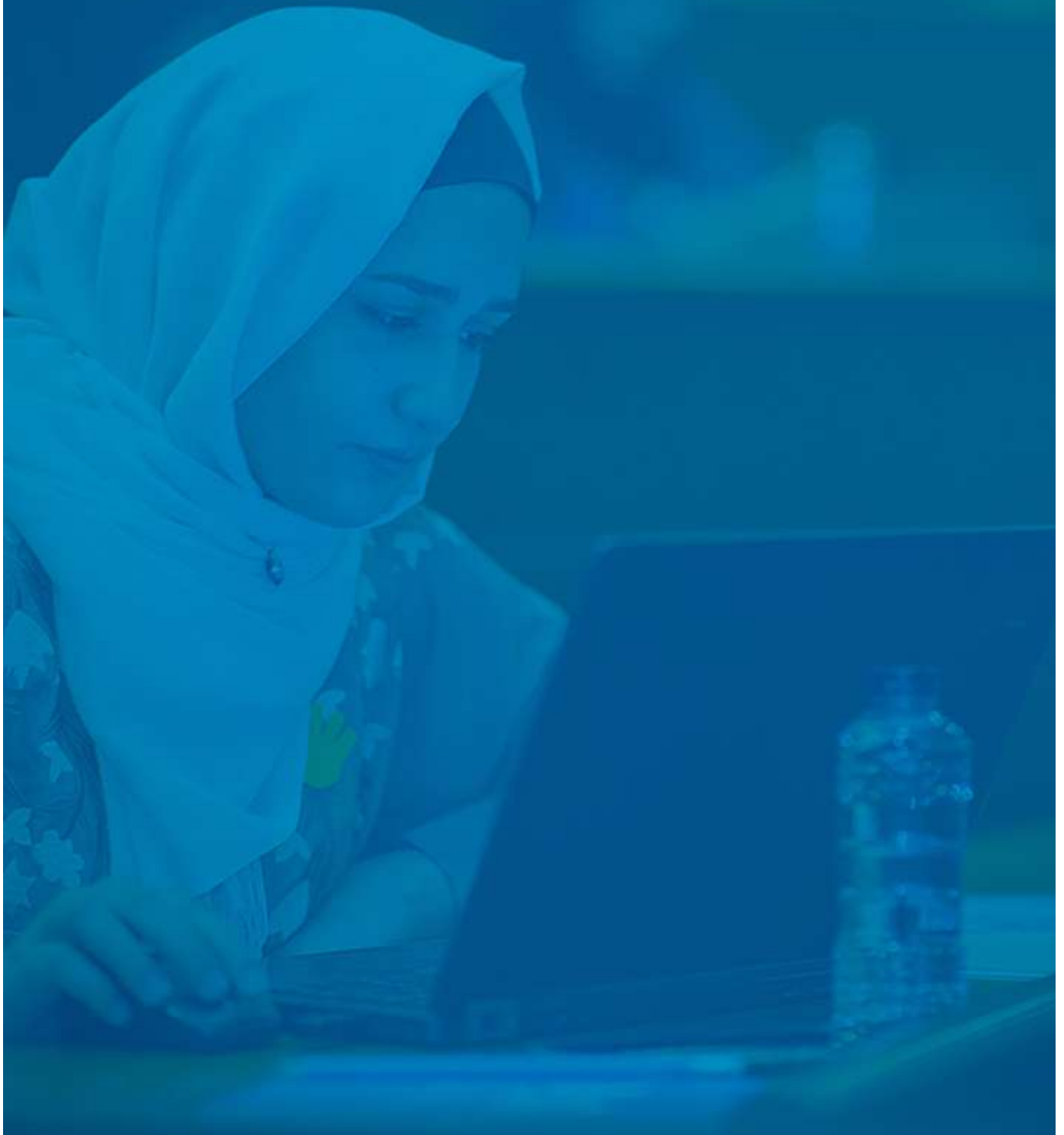
22.5 Appealing an Assessment Process

A student may make a written appeal regarding the process of the assessment in any course. The appeal should be addressed to the Dean within 5 working days of the release of the examination results. The appeal should identify specific and objective grounds for the grievance as they pertain to the process of assessment. The Dean will direct the Student Assessment and Progression Committee to review the circumstances in consultation with the course coordinator and other relevant faculty before making a decision, typically within five working days.

Possible outcomes from the deliberation of the committee include: upholding the grade, repeating the assessment, adjusting the grade, or seeking an assessment by another faculty not involved with the course.

23

EXAMINATION REGULATIONS



23 Examination Regulations

23.1 Responsibilities of the Student Assessment and Progression Committee (SAPC)

The SAPC is responsible for scrutinizing and monitoring of examination quality by:

1. Ensuring University and College regulations are adhered to
2. Reviewing reports from course coordinators
3. Reviewing external examiners' reports (if applicable) in matters related to the examination
4. Verifying with course coordinators that examination papers are vetted
5. Reviewing a sample of examination question papers
6. Confirming that appropriate standard-setting procedures are adopted
7. Reviewing examination 'item' performance
8. Reviewing the distribution of grades
9. Recommending improvements and ratifying changes to the examination process
10. Approval of timetables and invigilation guidelines of final examinations
11. Receipt and consideration of final examinations results

12. Recommendation, in consultation with course coordinators, of supplementary examinations and/or re-sits

13. Handling misconduct in examinations

14. Liaising with appropriate bodies in cases of student appeals that relate to examinations

15. Recommending amendments to the College examinations policy

16. Any other duties that may, from time to time, be assigned to the Committee

23.2 Examination Guidelines Design

Examinations should be both formative and summative. The methods of assessment used will be dictated by the purpose of the assessment.

Summative assessment is any form of assessment that will contribute to the final grade of a student. Guidelines for conducting summative assessments are as follows:

- a. Each course coordinator shall draw out a blueprint of course objectives and the examination instruments to be used to test these objectives. Multiple methods are usually required to achieve blueprint objectives. The different examination instruments allow a balance of strengths and weaknesses of each method.
- b. As much as possible, questions should assess higher-order thinking and not just a simple recall of information

- c. For skills and performance-based assessments, properly constructed checklists and/or rating scales should be used. Tasks should be clinically as authentic as possible.

23.3 Review of Examinations

For all exams (in-course and final), exam questions/stations/cases should be reviewed and amended by the course coordinator in consultation with the Student Assessment and Progression Committee.

23.4 Standard Setting

For each course, a defensible standard-setting method should be used by trained faculty. Arbitrary methods should not be used. The standard-setting procedure should be declared to the College Examinations Committee.

23.5 Marking of Examinations

Multiple choice questions (MCQs) shall be marked electronically and subjected to item analysis. For short notes and essays, model answers should be provided and used as the basis for marking and feedback to students. Several examiners should be available, but one examiner should mark the same question for all students for consistency. Double marking is encouraged. For Objective Structured Clinical Examination (OSCE) stations and short cases, properly designed checklists and rating scales should be used. Several examiners should be available. Each OSCE station should be assigned to one examiner.

23.6 Grades and Grading

Letter grades shall be used to describe the achievement level attained within a particular course. A final semester grade shall be based on continuous assessment throughout the semester as well as a final examination. A final examination is customary but may not be considered necessary in certain types of courses.

23.7 Item Analysis and Test Statistics

Student performance on exam questions should be analyzed using appropriate item analysis software by the course coordinators. Results of these analyses should be discussed by the relevant committees to assist in making informed decisions about the assessment process. For all examinations used by instructors, reliability indices should be determined, and the data used to improve on the assessment process in the College.

23.8 Feedback to Students on Examinations

Feedback on in-course examinations should be given to students within 1 week of the examination. Feedback should not involve the release of questions but a discussion of points of weaknesses with students. Feedback on final examinations is not typically provided.

23.9 Training of Students in Examination Methods

Students should be familiarized with the type of examinations in the College. Practice questions should be provided by the concerned coordinators.

23.10 Access to Old or Previous Exams

Students should not have access to questions used in previous examinations and stored in the College's examination questions bank.

23.11 Remediation

Students may be permitted to remediate on obtaining unsatisfactory rating (score of 50-69 or grade of D+, D, C, C-) course, subject to program regulations. If there is a case of a student who has obtained unsatisfactory rating in a course, CONM should provide an opportunity for students to remediate which contributes to the requirements for passing the course, at or before the end of the academic year.

23.12 Absenteeism from Examinations

Please refer to the attendance policy in the Student Handbook (Section 2.6)

23.13 Misconduct in Examinations

Please refer to the policy in the Student Handbook (Section 3). Misconduct in examinations should be reported to the SAPC by the senior invigilator of the examination during which the misconduct occurred. The SAPC will deliberate on the report. Thereafter, a recommendation will be made to the Dean.

23.14 Online Exams

23.14.1 General Conduct of Students

- A. Students must not indulge in any behavior or conduct that may disturb other candidates or disrupt the smooth progress of an examination.
- B. Students are not permitted to smoke in any part of the examination room.



- C.** Students must obey the instructions of any invigilator and their attention is drawn to the regulations governing admission to and departure from the examination room.
- D.** Students are not allowed to take into the examination room any unauthorized books, manuscripts, notes, bags, cases, or any means whereby they may improperly obtain assistance in their work. All such materials, including handbags, must be placed on a table outside the examination room.
- E.** Students are not allowed to take into the examination room electronic transmission devices such as mobile phones, pagers, PDAs, or any digital storage media such as flash drives or CDs.
- F.** Students are not allowed to take into the examination hall paper of any sort. A plain sheet of paper (or similar material) shall be provided in the examination hall should any student require it.
- G.** Students must be at the venue of the examination at least 10 minutes before exam commencement.
- H.** Students can be allowed to enter the exam room up to 30-minutes after the start of an exam. If a student arrives after 30-minutes, they will not be allowed entrance and will be advised to email the course coordinator and the Department of Student Services & Registration to inform them of the reason for being late.
- I.** Before the commencement of the examination, the student must place on the top right-hand corner of the desk their ID card for inspection by one of the invigilators.
- J.** Students must not use any means whatsoever to communicate or obtain, directly or indirectly, assistance in their work, or give or attempt to give, directly or indirectly, assistance to any other candidate.
- K.** Any suspected breach of the foregoing regulations will be investigated by the College.

24

PROFESSIONAL BEHAVIOR AND STUDENT FITNESS TO PRACTICE



24. PROFESSIONAL BEHAVIOR AND STUDENT FITNESS TO PRACTICE

Nursing and midwifery students enjoy special privileges, which come with responsibilities and expectations by society. Because of this, students need to be aware of the higher standards of professional behavior. MBRU College of Nursing and Midwifery will ensure that students are aware of this relationship with society and provide them with opportunities to learn and practice the expected standards of professional behavior.

This guidance considers Nursing and Midwifery students' fitness to practice in relation to their behavior and in relation to their health when appropriate. Poor health can affect a student's fitness to practice either directly or by being a cause of misconduct.

24.1. Expectations for Appropriate Fitness to Practice

24.1.1. Displaying Professional Conduct

Nursing and midwifery students should acquire and demonstrate the types of behavior that mark them as fit to practice as doctors by

- maintaining the standards of competence and care that will not put patients and the public at risk
- striving for high ethical standards in their professional and personal lives

24.1.2. Providing Good Clinical Care

- Being able to provide good clinical care is fundamental to becoming a specialist nurse. This objective should

guide a student's behavior in both their clinical and academic work. Nursing and Midwifery students should reflect on how they can support and promote good clinical care as part of their nursing and midwifery education.

- In order to demonstrate that they are fit to practice, students should:
 - Recognize and work within the limits of their competence and ask for help when necessary
 - Accurately represent their position or abilities
 - Make sure they are supervised appropriately for any clinical task they perform
 - Respect the decisions and rights of patients
 - Be aware that treatment should be based on clinical need and the effectiveness of treatment options, and that decisions should be arrived at through assessment and discussion with the patient
 - Not discriminate against patients by allowing their personal views to affect their professional relationship or the treatment they provide or arrange (this includes their views about a patient's age, color, culture, disability, ethnic or national origin, gender, lifestyle, marital or parental status, race, religion or

beliefs, sex, sexual orientation, or social or economic status)

- Behave with courtesy
- Report any concerns they have about patient safety to the appropriate person

24.1.3. Maintaining Good Nursing Practice

- Students must be aware of their responsibility to maintain their knowledge and skills throughout their careers
- Students are expected to keep up to date and to apply the knowledge necessary for good clinical care. They should understand that as nurses they will have to participate in audits, assessments and performance reviews throughout their careers as part of re-licensing
- In order to demonstrate that they are fit to practice, students should:
 - reflect regularly on standards of nursing practice in accordance with locally agreed and adopted guidance by MBRU, and local and clinical placement hospitals
 - attend required learning sessions complete and submit course work on time
 - be responsible for their own learning
 - reflect on feedback about their performance and achievements and respond constructively
 - be familiar with the guidelines of local

healthcare providers

- respect the knowledge and skills of those involved in their education
- make sure they can be contacted and always respond to calls in relation to the care of patients or their own education

24.1.4. Engaging in Teaching and Training

- Nursing and healthcare education have strong professional and academic aspects to it. Nursing and midwifery students must engage with patients and gain experience in clinical settings.
- Nurses and students must be willing to contribute to the teaching, training, appraising and assessing of students and colleagues.
- They should be honest and objective when appraising self and others
- In order to demonstrate that they are fit to practice, students should:
 - Demonstrate basic teaching skills
 - Be aware of the principles of education in nursing
 - Be willing to contribute to the education of other students
 - Give constructive feedback on the quality of their learning and teaching experiences.

24.1.5. Building Ethical and Respectful Relationships With Patients

- Nursing students will have extensive contact with patients during their

course and must build relationships with patients based on openness, trust and good communication.

- Students should maintain a professional boundary between themselves and their patients. They must not use their professional position to cause distress or to exploit patients.
- Students should obtain patient consent for any treatment, teaching or research.
- Patients have a right to expect information about them to be held in confidence. A patient's case must not be discussed in a way that would identify them with anyone not directly involved in their care, or in a public place. Academic work that contains specific information about a patient must not identify the patient if it is to be seen outside the patient's care team. This includes case or log reports that are submitted as part of the student's course work or assessment.
- In order to demonstrate that they are fit to practice, students should:
 - Respect patients and treat them with dignity
 - Be aware of ethical issues in their professional behavior with patients
 - Be open and honest when dealing with patients, their carers, relatives, or anyone else close to them
 - Make sure that patients have

consented to a student being involved in their care

- Make sure they are clearly identified as students
- Dress in an appropriate and professional way and be aware that patients will respond to appearance, presentation and hygiene
- Make sure they follow the hospital adopted guidance on consent and confidentiality

24.1.6. Working Collaboratively With Colleagues

- Nursing students need to be able to work effectively with colleagues inside and outside of healthcare facilities in order to deliver a high standard of care and to ensure patient safety.
- Nurses must develop skills to work in multi-disciplinary teams. This involves respecting the skills and contributions of colleagues and other professionals, and developing effective communication with other members of the team and with patients.
- It is also important that nurses protect patients from harm posed by another colleague's behavior, performance or health. They should take steps to raise any concerns with the appropriate person.
- In order to demonstrate that they are fit to practice, nurses should:

- Demonstrate skills that allow them to deal with uncertainty and change in the workplace
 - Be able to work effectively in a team and to take on different roles as appropriate, including taking responsibility for tasks
 - Develop and demonstrate teamwork and leadership skills
 - Be aware of the roles and responsibilities of other people involved in delivering healthcare
 - Respect the skills and contributions of colleagues and other professionals and not discriminate against them
 - Raise concerns about overall practice in a healthcare setting or about colleagues, including other students, medical practitioners and other healthcare workers, with the appropriate person if patients are at risk
- be passed on to patients, or if they are receiving treatment that could affect their judgment or performance
- In order to demonstrate that they are fit to practice, nurses should:
 - Be aware that their own health problems may put patients and colleagues at risk
 - Seek medical or occupational health advice, or both, if there is a concern about their health, including mental health
 - Accept that they may not be able to accurately assess their own health, and be willing to be referred for treatment and to engage in any recommended treatment programs
 - Protect patients, colleagues and themselves by being immunized against common serious communicable diseases if vaccines are available and are recommended by the relevant health authority

24.1.8 Understanding Risks Associated With Their Own Health

- It is important that Nursing students are aware that their own poor health may put patients and colleagues at risk
- Good nursing practice requires nurses to seek and follow advice from a suitably qualified professional about their health. This is particularly important if they have, or suspect they have, a serious condition that could
- Not rely on their own or another student's assessment of the risk posed to patients by their health, and should seek advice, when necessary, from a qualified clinician or other qualified healthcare professional
- Be aware that when they graduate they are responsible for informing their employer or other appropriate person if their health poses a risk to patients or the public

24.1.9 Demonstrate Appropriate Social Behavior

Students are viewed as representatives of the university, and should not allow their actions to reflect negatively upon the university or upon their profession. In order to demonstrate fitness to practice, the student is expected to:

- Recognize the right of all individuals to be treated with respect without regard to race, age, gender, disability, national origin, position, or religion
- Avoid physical, verbal or written physical or sexual harassment
- Avoid obstruction of due process through lying, using pressure, threat, abuse, or similar practices against any person, or withholding of pertinent information.
- Suspension from studies
- Dismissal from University
- Informing law enforcement agencies
- Informing concerned professional licensing bodies
- Other penalties or corrective actions as deemed appropriate and necessary by the fitness to practice committee

24.1.10 Consequences of Breaching the Fitness to Practice

If there are grounds for concern as to the fitness of the nursing student for practice and upon investigation the student was found to be in breach of the fitness to practice code, the fitness to practice committee may recommend any of the following:

- Continue his or her studies without limitation
- Continue his or her studies under specified limitations and conditions
- Be prohibited from entering specified clinical facilities as a nursing student
- Review the Nursing and Midwifery students' Code of Conduct on a regular basis.
- Initiate the process for dealing with a report of infringement of Code of Conduct on instruction from the Dean
- Raise an independent ad hoc investigation committee when needed
- Adjudicate on the basis of the report of the ad hoc investigation committee

24.2 Policies and Procedures for Dealing with Suspected Breaches of Fitness to Practice

24.2.1 Committee for Fitness to Practice

The following committees will be involved in the handling of the rare cases of report or evidence of infraction of this code to the extent that raises concern about the fitness of the student to practice. The committee mandate includes:

- Review the Nursing and Midwifery students' Code of Conduct on a regular basis.
- Initiate the process for dealing with a report of infringement of Code of Conduct on instruction from the Dean
- Raise an independent ad hoc investigation committee when needed
- Adjudicate on the basis of the report of the ad hoc investigation committee

24.2.2 Membership:

- Associate Dean for Education (ex-officio)
- Four faculty members, elected by Faculty
- A student representative selected by MBRU student council
- The Dean appoints the Chairperson from among the membership.
- The Committee on Fitness to practice shall meet at least once per term and whenever the need arises.

24.2.3 The ad hoc Investigation Committee

An ad hoc committee is constituted for each case and it reports to the Committee on Fitness to practice. The ad hoc committee mandate is to gather information and evidence sufficient to enable the Committee on Fitness to practice to make a decision on the existence and seriousness of the breach of the code of conduct.

24.2.4 Membership

Three members with appropriate expertise to conduct the investigation, appointed by the Committee for Fitness to practice. None shall be a member of the Committee on Fitness to practice.

24.2.5 The ad hoc Dispute Resolution Committee

An ad hoc committee established by and reporting to the Dean constituted for each case. The mandate of the ad hoc

dispute resolution committee is to determine whether due process has been followed in handling the allegation and receive new facts if these become available. The committee will also consider the appeal from the student in the event of a dispute regarding the outcome of adjudication.

24.2.6 Membership

This committee is made up of three members drawn from the College Dispute Resolution Panel.

- One nominated by the Dean, who shall Chair the Committee and submit reports.
- One member nominated by the student.
- One member nominated by the Committee on Fitness to practice.

24.3 Procedure for Handling an Allegation of a Breach to Fitness to Practice by a Nursing Student

The handling of an allegation of misconduct must be confidential, expeditious and strictly in accordance with laid down process as follows: Preliminary Evaluation, Investigation, Adjudication, Appeal.

24.3.1 Preliminary Evaluation

- A report of allegation of potential infraction of the Code of Conduct shall be directed to the Dean, who will evaluate and share with the Chairperson of the Committee on Fitness to Practice, if he/she considers that there are enough grounds to proceed.

- Anonymous allegations shall not normally be considered. If the nature of the allegation makes anonymity of the reporter expedient, the name and identification of the author will be removed from any written document but be known to the Dean

Within two weeks of receiving a complaint, the Committee on Fitness to Practice shall determine whether:

- the matter should be dealt with informally or investigation should proceed
- any action regarding the status of the student should be taken; for example:
 - continue his or her studies without limitation
 - continue his or her studies under specified limitations and conditions
 - be prohibited from entering specified clinical facilities as a nursing student
- The Chairperson may, during the proceedings, review and change a decision regarding a nursing student's status.
- The student may appeal to the Dean if dissatisfied with the decision of the Committee.
- The Dean may refer the appeal to the Adjudication Committee. Pending any such adjudication the Committee's decision shall remain in force.

- Any member (including the Chairperson) of the Fitness for Practice Committee that has any involvement or interest in the case arising other than by way of rules of procedure, shall stand down from the Committee while the case is being considered, and another member of the Committee shall be appointed.

24.3.2 Investigation

- The Fitness to Practice Committee shall set-up an ad hoc Investigation Committee. The membership shall not include anyone with previous involvement in the case.
- The Chairperson of the Committee on Fitness to Practice shall write to inform the nursing student concerned that an investigation of the student's fitness for practice is going to take place stating the nature of the concern and the grounds for launching the investigation.
- The ad hoc Investigation Committee shall investigate the allegations and associated circumstances and submit a written report prepared and submitted by the Chairperson of the ad hoc Investigation Committee to the Chairperson of the Fitness to Practice Committee within two weeks. The report shall be limited to facts, without judgement.
- The student may be accompanied by a member of the MBRU community of his/her choice.

- The student shall be given the opportunity to comment on the accuracy of the facts gathered by the ad hoc Investigation Committee by appending his/her signature to the report.

24.3.3 Adjudication

- The student shall be required to attend the meeting for Adjudication in person.
- The student shall inform the Chairperson of the Committee on Fitness to Practice in writing of the details in advance of the meeting if he/she has good cause to object to the membership of the Committee.
- The Chairperson shall decide on whether to advise the Committee that the member(s) should be replaced and shall inform the student accordingly.
- The adjudication may proceed in the student's absence, if the student fails to attend the meeting without reasonable explanation. The Committee on Fitness to Practice shall have discretion to decide what constitutes a "reasonable explanation".
- The Committee or the student may invite anyone who may have information relevant to the case to attend the adjudication meeting to give evidence in writing or in person.
- The meeting shall be held in private and all proceedings shall be confidential
- The Committee shall determine its own procedure for the conduct of the meeting

but shall include the following elements:

- A statement of the allegation and the findings of the ad hoc Investigation Committee
- Response of the student to the allegation and the outcome of investigation
- Summary and conclusion of facts on both sides
- Pronouncement of the adjudication.

Possible outcome of the adjudication

- the nursing student is fit for practice and recommend that he/she may continue on the course with no conditions.
- there are grounds for concern as to the fitness of the nursing student for practice but he or she may continue his or her course of study under specified conditions.
- the nursing student is unfit for practice with recommendations that may include:
 - suspension from studies
 - dismissal from University
 - informing law enforcement agencies
 - informing concerned professional licensing bodies

- The Chairperson of Committee on Fitness to Practice shall communicate the decision of the Committee in writing to the student and the Dean.

24.3.4 Appeal

- A nursing student shall have the right of appeal against a decision of the Committee on Fitness to Practice.
- The appeal shall be submitted in writing within twenty-eight consecutive days of the notification of the result of the decision to the Dean stating the grounds of appeal.
- The Dean will raise the ad hoc Dispute Resolution Committee to consider the appeal.
- During the consideration of the appeal, the decision of the Committee on Fitness to Practice shall remain in force.
- An Appeal hearing shall be arranged within one week of receiving the appeal in accordance with the following procedure:
 - The student may choose to be accompanied by a nominated 'friend' from the MBRU community (for example, a student representative).
 - The meeting shall be held in private
 - The case by the Committee on Fitness to Practice shall be presented by its Chairperson, or nominee
 - The student shall state his grounds for appeal and then his defense.
- The Committee on Fitness to Practice shall respond
- The student shall be given the opportunity to react to the response of the Committee on Fitness to Practice
- The Chairperson of ad hoc Dispute Resolution Committee shall summarize proceedings
- The Chairperson of ad hoc Dispute Resolution Committee shall pronounce the Committee's decision at the same or another sitting
- The ad hoc Dispute Resolution Committee may confirm, amend, or refer the decision back to the Committee on Fitness to Practice
- The Chairperson of the ad hoc Dispute Resolution Committee shall inform the Dean of the decision and the reasons for the decision within seven working days
- If, at any stage, it becomes apparent or it is suspected that the nursing student's alleged problems are caused by ill health or disability, these procedures shall be suspended and the Committee's procedures for dealing with serious ill health shall be commenced
 - If the Chairperson of any of the bodies involved considers that the student may have committed a legal offence, the Chairperson shall suspend proceedings and refer the

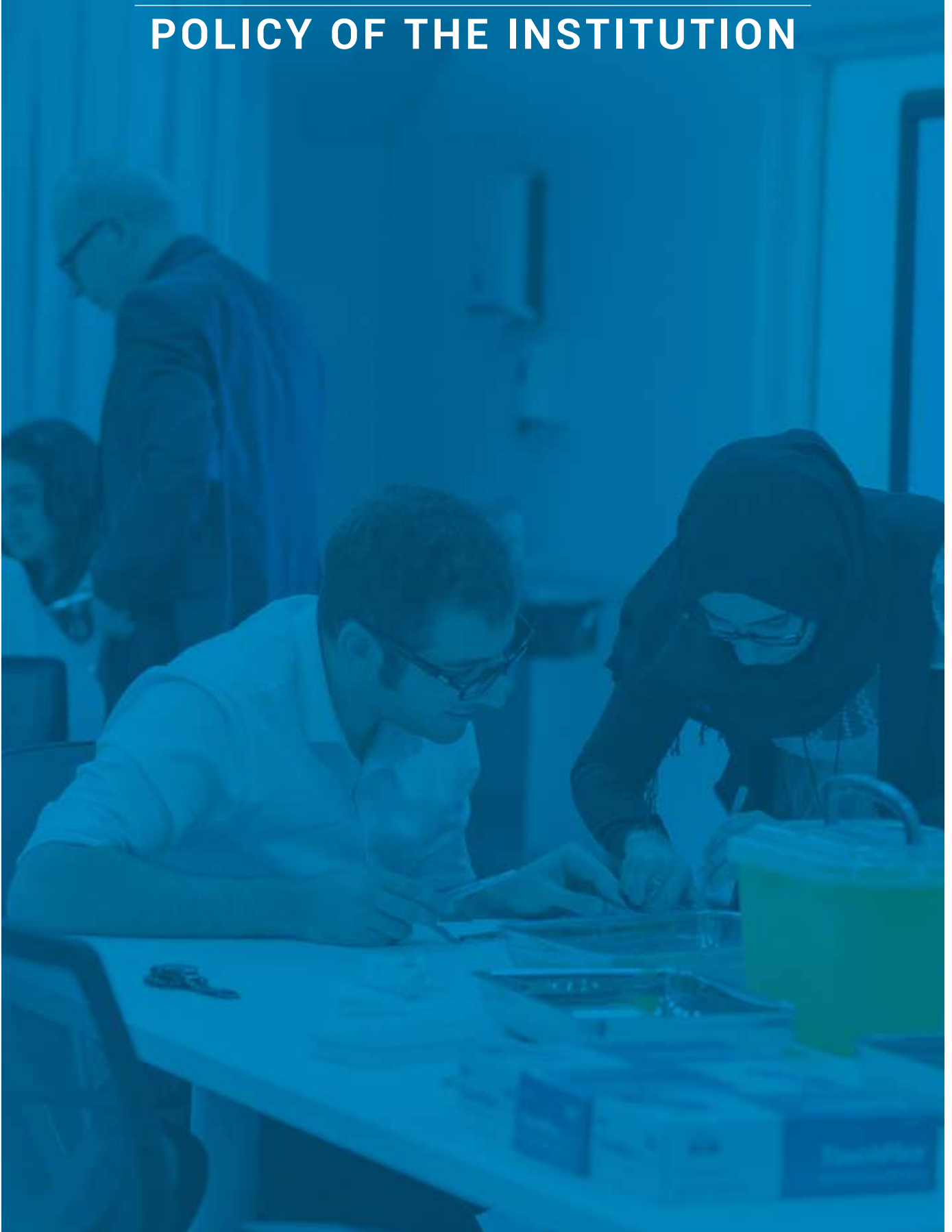
circumstances to the Dean

24.4 Procedures for dealing with a nursing student's serious illness or disability likely to affect fitness to practice.

- Any member of the MBRU Community who has information, knowledge, or concern about any student's illness or disability likely to affect their fitness to practice, has a responsibility to report to Dean
 - Nursing and Midwifery students have a responsibility to report any illness or disability likely to affect their fitness to practice to the Dean
 - The following procedures shall be followed for Nursing and Midwifery students whose health is considered to make them unfit for practice
 - The case shall be referred to the Chairperson of the Committee on Fitness to Practice
 - The Committee shall appoint a sub-committee of three of its members (with the option to co-opt experts as needed) to investigate the student's fitness to practice based on his/her health or disability and report to the full Committee
 - The Committee shall make a decision based on the findings of the sub-
- committee and shall communicate the decision in writing to the Dean
- The Dean shall inform the student of the Committee recommendations
 - A student shall have the right to appeal against a decision of the Committee on Fitness to Practice to the Dean, who may decide on whether to appoint an ad hoc Dispute Resolution Committee

25

STATEMENT ON THE RESEARCH POLICY OF THE INSTITUTION



25. STATEMENT ON THE RESEARCH POLICY OF THE INSTITUTION

MBRU is committed to support research activities and has budgeted 26% of the total operational expenditure to support faculty research, innovation, creative, and scholarly activities annually to maintain and expand ongoing research capacity. This is through competitive Internal Research Grant Awards to faculty members in all Colleges. In addition, MBRU absorbs salary costs of Principal Investigators, of Research Assistants and provides research bench spaces, consumables heavy research equipment, making the financial support to research far in excess of the mandatory 5%. To support its efforts to enhance research, the University has continuously sought to identify new external funding opportunities for faculty research.

The MBRU Research and Graduate Studies promotes an environment where research is supported, the incoming faculty nurtured, and the necessary infrastructure and resources are provided, so that its investigators can flourish. Research and Graduate Studies department has developed a research strategy that is aligned with MBRU Vision, Mission and Goals. The strategic goals, initiatives, and specific activities of the University focus on encouraging the research output and impact from MBRU faculty members and fulfilling this vision to become a global hub for innovative and integrated healthcare education and research at the service of humanity. The integration of all research activities at Dubai Healthcare

City (DHCC) and the establishment of an Integrated Academic Health System will be an important strategic step in this direction.

In order to attract top quality scientists and researchers, MBRU is committed to establishing state-of-the-art research facilities. A cutting-edge research infrastructure will serve as a platform for initiating highly competitive research projects. In addition, it will help faculty researchers to build and oversee strong research groups in their areas of expertise. Towards this, MBRU has developed core facilities and research laboratories that will hold the necessary equipment and technologies for its researchers. In addition, MBRU has collaborated with the Al Jalila Foundation to develop a modern research facility that can accommodate upwards of 70 researchers with access to high tech research equipment that allow research into a broad range of specialties. Moreover, MBRU will also allocate regular funds to upgrade research equipment and bring new technologies to the University. In support of research endeavors, MBRU underwrites the salaries of research faculty, research assistants, post-doctoral fellows, laboratory technologists and graduate students have access to scholarships.

MBRU will continue to allocate regular funds to upgrade research equipment and bring new technologies to the University. Faculty members are highly

qualified and have a strong footing in research capability in addition to other requirements. The Al Maktoum Medical Library houses updated printed and electronic resources that will support

faculty in research and teaching. The research opportunities and training available to MBRU students creates the next generation of scholars well-prepared to advance knowledge and discovery.

25.1 POLICIES AND PROCEDURES ON PROJECTS, THESES AND DISSERTATIONS

25.1.1 Registration

Students will be enrolled for the dissertation at the commencement of the program

25.1.2 Proposal Submission & Approval

Following commencement of the program, students will be requested to identify their area of nursing interest for the purposes of undertaking a dissertation.

25.1.3 Selection of Principal Supervisor

Two Supervisors will be appointed based on their clinical, research or scholarly interest in the identified area of nursing practice.

25.1.4 Research Committee

The research Committee at the College of Nursing and Midwifery monitors execution of all faculty and student research projects at the college to ensure that researchers have adhered to the stipulated standards and approved protocol. The committee also monitors the performance of graduate students in the College of Nursing and Midwifery through regular review of each student's progress, up to submission of thesis and satisfactory amendments following external reviews. Report the outcome of review of student progress to the Dean.

25.1.5 External Readers

All Dissertation following internal moderation will be made available for review by the appointed external examiner. It would normally be expected that the External Examiner would critically comment on at least thirty percent of the dissertations.

25.1.6 Revisions

Amendments and revisions to the dissertation as outlined by internal and external moderators must be addressed prior to final submission. The final submission with amendment must be verified by the supervisor(s) before lodgment with the MBRU Library.

25.1.7 Award of Degree

Students will be awarded the MSc Award following successful completion of all compulsory coursework, practice profile and dissertation. All individual marks and classified awards will be moderated and ratified at an end of cohort Board of Examiners.

25.1.8 Intellectual Property Rights and Copy Rights

The University recognizes that it has both a moral responsibility and a legal duty to recognise and respect the intellectual property rights of third parties. It is committed to taking all reasonable

efforts to ensure that such rights are respected. The University will cooperate with collection societies which represent third-party rights holders, and will act promptly and in good faith in response to any issues raised by such societies or by rights holders directly.

Name of Faculty	Specialization	Degrees held	Research supervision in years	Quality Points
Billiejoan Rice	Cardiac Nursing	BSc (Hons) Nursing MSc Nursing EdD (Taught Doctorate in Education)	13	13
Loreena Hill	Cardiology/Heart Failure	BSc, MSc, PhD	3.5	14
Paul Tierney	Nursing/Cardiac Nursing	BSc (Specialist Practice in Nursing: Cardiology Nursing) MSc (Advanced Professional Practice)	5	12
Iseult Wilson	Musculoskeletal conditions Qualitative research	MSc, PhD	10	10
Patricia McNeilly	Children's Nursing	BSc (Hons) Applied Psychology MSc Social Research Methods MSc Nursing PGCert in healthcare education	6	17
Barry Quinn	Cancer, palliative care, leadership and management	PhD Doctor of Philosophy PhD, CLAHRC Fellow, PGC Teaching, MSc, BD, Bacc Phil, RN	5	18
David R Thompson	Cardiovascular nursing; Cardiovascular disease prevention and rehabilitation	BSc (Nursing), PhD (Psychology), MA (Policy), MBA	20	30
Kevin Gormley	Health Care Policy and Vulnerability	Doctor of Philosophy Degree MSc Social Policy Planning and Administration (University of Ulster) BA	20	20
Wesley Sterling	Undergraduate and Postgraduate Biomedical Science and Clinical Skill	Masters Biomedicine		16
Jolly Isaac	Medical-surgical Nursing, Education, Simulation	Ed.D (Higher Education & Adult Learning), MSc Nursing (Medical -Surgical), Bachelors in Nursing	0	3

24

FACULTY

25

SENIOR ADMINISTRATORS



24. FACULTY

MBRU College of Nursing and Midwifery is committed to recruiting qualified, experienced, and dedicated faculty to set a foundation and culture of excellence. Full-time faculty members will, as core teachers, have a major role in the design and delivery of teaching. In addition, MBRU College of Nursing and Midwifery will seek and recruit adjunct and part-time faculty members to contribute to teaching and assessment, as appropriate. Criteria for appointment of faculty are described in the University's Policy

and Procedures on Recruitment and Appointment of Faculty and are based on the standards set by UAE Commission for Academic Accreditation. The table below lists full-time QUB faculty members who will teach part-time on the MSc Clinical Nursing, as well as full-time MBRU faculty members with academic appointments in the College of Nursing and Midwifery who will support the programs, at the time of this writing. New faculty members are expected to join as the College continues its recruitment campaign.

Msc. in Cardiovascular and Pediatric Nursing Programs Faculty List

QUB School of Nursing and Midwifery – Adjunct Faculty



Professor Donna Fitzsimons

Head of the School of Nursing and Midwifery
PhD – Ulster University, UK



Professor David Thompson

Professor of Nursing
PhD – Manchester University, UK



Dr. Barry Quinn

Senior Lecturer
PhD- King's College, London, UK



Dr. Billiejoan Rice

Lecturer Education
EdD – Queen's University Belfast, UK



Dr. Loreena Hill

Lecturer
PhD – Ulster University, UK



Dr. Breidge Boyle

Lecturer in Children's and Neonatal Nursing
PhD – University College London, UK



Dr. Patricia McNeilly

Lecturer Education in Children's Nursing
PhD – Queen's University Belfast, UK



Niall McKenna

Lecturer
MSc in Nursing Science, UK



Paul Tierney

Lecturer
MSc Advanced Professional Practice, UK

MBRU Faculty



Professor Kevin Gormley

Dean of College of Nursing & Midwifery, MBRU

PhD – Ulster University, UK



Dr. Jolly Isaac

Lecturer – Nursing & Simulation Educator

EdD – Walden University, USA



Professor Alawi Alsheikh-Ali

Provost
Dean - College of Medicine
Professor - Cardiovascular Medicine

PhD – Tufts University School of Medicine, USA



Professor Glenn Matfin

Professor - Medicine

MSc – University of Oxford, UK



Professor Amar Omer

Professor - Biostatistics

PhD – University of Méditerranée Aix Marseille & University of Gazira, France and Sudan



Mohamad Alameddine

Professor of Health Management and Policy, College of Medicine

Ph.D in Health Policy from University of Toronto, Ontario, Canada



Jeyaseelan Lakshmanan

Professor of Biostatistics, Basic Sciences

Ph.D. in Biostatistics from Madras University, India, Diploma in Medical Statistics and Clinical Epidemiology from Newcastle University, Australia



Ms. Meghana Sudhir

Simulation Educator & Lecturer Nursing

MSc – The Oxford College of Nursing, Rajiv Gandhi University for Medicine & Health Sciences, India



Ms. Sharon Mascarenhas

Simulation Educator & Lecturer Nursing

MSc – Damodar Thackersey Women's University, Mumbai, India

25. SENIOR ADMINISTRATORS



Amer Sharif
Vice Chancellor



Zaid Baqain
Deputy Vice Chancellor –
International Relations

Dean –
Hamdan Bin Mohammed
College of Dental Medicine

Professor – Oral and
Maxillofacial Surgery



Mutairu Ezimokhai
Senior Advisor –
Vice Chancellor's Office

Professor – Obstetrics
and Gynecology



Amer Al Zarooni
Deputy Vice Chancellor -
Administration



Alawi Alsheikh-Ali
Provost

Dean -
College of Medicine

Professor -
Cardiovascular Medicine

26

BOARD OF TRUSTEES



26. BOARD OF TRUSTEES



H.H. Sheikh Ahmed bin Saeed Al Maktoum

Chancellor of MBRU
Chairperson of the Board of Trustees



H.E. Dr. Abdulla Mohamed Al Karam

Chairman of the Board of Directors and Director General of the Knowledge and Human Development Authority (KHDA)



H.E. Dr. Raja Easa Al Gurg

Vice Chairperson of the Board of Trustees



Dr. Amer Ahmad Sharif

Vice Chancellor
MBRU



H.E. Abdul Rahman bin Mohammed Al Owais

Minister of Health and Prevention



Professor Alawi Alsheikh-Ali

Provost

Dean -
College of Medicine

Professor -
Cardiovascular Medicine



H.E. Humaid Mohammed Al Qatami

Director-General of the Dubai Health Authority



Professor Ian Greer

President and Vice -
Chancellor
Queens University Belfast



H.E. Abdullah Abdul Rahman Al Shaibani

Former Secretary -
General of The Executive Council-Dubai

CONTACT INFORMATION



27. CONTACT INFORMATION

ADDRESS

Mohammed Bin Rashid University of Medicine and Health Sciences (MBRU)
Building 14, Dubai Healthcare City
P.O. Box 505055, Dubai, United Arab Emirates

WEBSITE

www.mbru.ac.ae

EMAIL ADDRESSES

info@mbru.ac.ae

PHONE NUMBERS

800-MBRU (800-6278)



جامعة محمد بن راشد
للطب و العلوم الصحية
MOHAMMED BIN RASHID UNIVERSITY
OF MEDICINE AND HEALTH SCIENCES

College of Nursing & Midwifery

MASTERS IN CARDIOVASCULAR NURSING &
MASTERS IN PEDIATRIC NURSING

