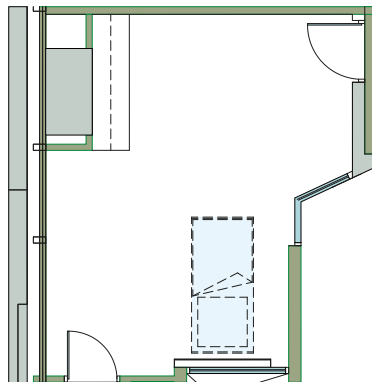




Maternity Ward

Khalaf Ahmad Al Habtoor Medical Simulation Center

Venue Type:	Simulated Maternity Ward
Maximum Capacity:	1 Bed (10-12 participants)
Size:	312.15 Square Feet
Amenities:	The ward has a SimMom simulator where the baby can be delivered normally or by caesarian section. Abnormal labor and birthing difficulties can also be simulated. In addition to the above, the maternity environment is equipped with a neonatal resuscitation unit, incubator and monitoring equipment. It is equipped with Scotia Medical Observation & Training System (SMOTS).
Parking:	Dubai Health Care City provides a number of paid parking options for delegate guests.



Disclaimer: Layout is for illustrative purpose only